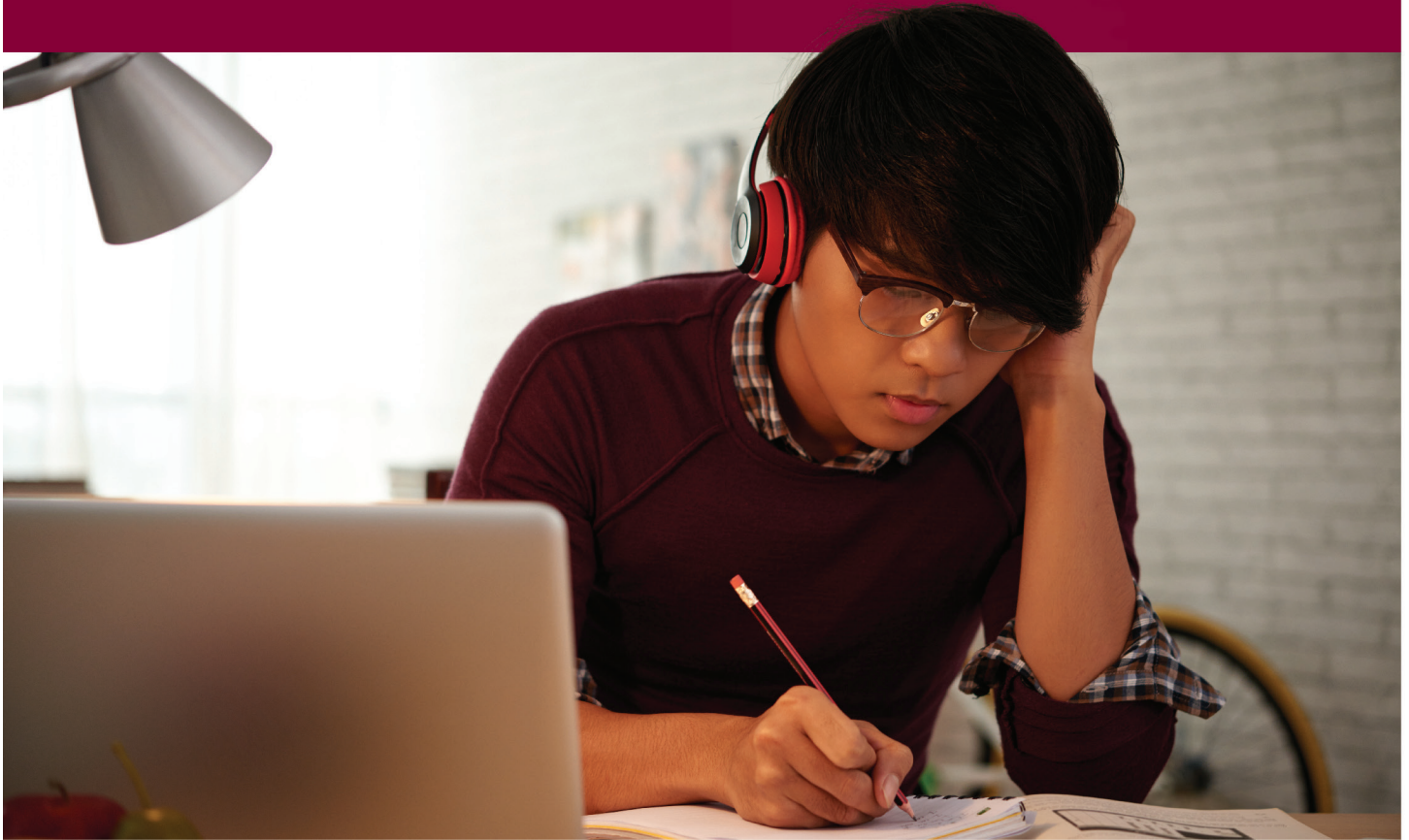




MONTEREY PENINSULA
COLLEGE

SUMMER 2020 CLASS SCHEDULE

www.mpc.edu



Ready to fast-track your college and career goals?



**MPC
is your
\$mart
Choice!**

Summer 2020 Online Classes

**Monterey Peninsula
College Governing Board
of Trustees:**

- Ms. Yuri Anderson, Chair - Area 2
- Dr. Loren Steck, Vice Chair - Area 5
- Ms. Rosalyn Green, Trustee - Area 1
- Ms. Marilyn Dunn Gustafson,
Trustee - Area 4
- Mr. Rick Johnson, Trustee - Area 3
- Mr. Robert Mountain,
Student Trustee

Monterey Peninsula College is a community college accredited by the Western Association of Schools and Colleges. The college is open to high school graduates and all others 18 years of age or older who may profitably pursue a course of study. Students in grades 6-12 may attend with written approval from their school principal and their parent(s) prior to registering. Students in grades 6-8 need additional approval from the Dean of Student Services.

**Call Admissions & Records at
(831) 646-4002
for registration information.**

All Monterey Peninsula College written publications will be made available in alternative formats (print, Braille, audiotape, or e-text). Requests for alternate media should be made to Access Resource Center at (831) 646-4070.

MPC Smoking Policy:
The use of tobacco – to include smoking and/or chewing any form of tobacco – is only permitted in designated parking lots.
(MPC Board Policy #3570)

President's Welcome

Summer 2020 at Monterey Peninsula College

Welcome to Monterey Peninsula College (MPC), a vibrant institution of higher learning. MPC offers exceptional educational opportunities at our campus in Monterey, our Education Center at Marina, our Public Safety Training Center in Seaside, and online.

With a high-quality education, you can transform your personal and professional life. Whether your goal is to get a head start on your college education, earn a certificate or an associate degree, transfer to a four-year university, update your skills, train for a new career, or enrich your personal life, MPC can help you achieve it.

Wherever you are on your educational path, MPC will help you take the next step toward success.

I look forward to seeing you on campus!

David Martin
Interim Superintendent/President

Verano 2020 en Monterey Peninsula College

Bienvenidos al Colegio de la Península de Monterey (MPC), un colegio vibrante de educación. MPC ofrece oportunidades excepcionales de educación en nuestras localidades en Monterey, Centro Educativo de Marina, Centro de Entrenamiento de Seguridad Pública, y en línea.

Con una educación de alto nivel, tú puedes transformar tu vida personal y profesional. Si tu meta es avanzar tu educación, recibir un certificado, un diploma asociado, transferirte a una universidad, mejorar tus habilidades, recibir entrenamiento para una nueva carrera, o enriquecer tu vida personal, MPC está aquí para ayudarte a obtenerlo.

En lo que necesites, MPC te ayudará a tomar el siguiente paso a tu éxito.

¡Espero verte en nuestro colegio próximamente!



Register for Summer 2020 Online Classes

Monterey Peninsula College's online courses offer the perfect opportunity for students to complete coursework while providing options for those whose work, travel, and family commitments demand increased flexibility.

MPC's online courses

- fulfill MPC and CSU general education requirement
- develop information literacy skills
- strengthen math skills
- sharpen skills in business, computer science, and technology

Learn more about the online courses and programs offered at MPC by visiting
<http://www.mpc.edu/onlinecourses>

Calendar of Important Dates

Summer Session 2020

June 8 to July 17, 2020 (6-week session)

June 8 to July 31, 2020 (8-week session)

| | |
|--------------------|--|
| April 13 | Beginning of priority registration by WebReg |
| April 20 | Open registration |
| June 7 | Last day to register through WebReg without an add code |
| June 8 | Classes begin |
| June 8 - 10 | Late registration and program changes. Please check online schedule for class specifics. |
| July 1 | Graduation application deadline. |
| July 3 | HOLIDAY: Independence Day Observance |
| July 17 | End of 6-week session |
| July 31 | End of 8-week session |

Fall Session 2020

August 14 to December 11, 2020

| | |
|-----------------------|---|
| April 22 | Priority registration begins |
| May 4 | Open registration |
| August 13 | Last day to register through WebReg without an add code |
| August 14 | Classes begin |
| August 14 - 29 | Late registration – add codes required for registration |
| August 29 | Last day to drop semester-length courses and be eligible for a refund |
| August 29 | Last day to add a semester-length course with an add code |
| August 30 | Last day to drop semester-length courses without a “W” grade |
| August 31 | Census Day |
| September 7 | HOLIDAY: Labor Day Observance |
| September 12 | Last day to request pass/no pass grade option for semester-length courses |
| November 2 | Graduation application deadline |
| November 11 | Last date to drop semester-length courses and receive “W” grade |
| November 13 | HOLIDAY: Veterans Day Observance |
| November 26-28 | HOLIDAY: Thanksgiving |
| December 7-11 | Final Examinations |
| December 11 | End of semester |

Information:
(831) 646-4000

Admission & Records:
(831) 646-4002

TTY:
(831) 645-1319

Web Registration (WebReg):
www.mpc.edu

Campus Security:
(831) 646-4099

Counseling:
(831) 646-4020

Assessment Center:
(831) 646-4027

Child Development Center:
(831) 646-4066

Bookstore:
(831) 657-4680

Library:
(831) 646-4262

Marina Education Center:
(831) 646-4850

MPC Public Safety Training Center:
(831) 646-4240

Financial Aid:
(831) 646-4030

Schedule Changes

Adds and/or Drops can be made by WebReg 24 hours a day online.

If course registration is not completed before the term begins, students must attend class, request an add code from the instructor and use WebReg to register during the late registration period.

STUDENT SERVICES:

Admissions & Records Office
(831) 646-4002
www.mpc.edu/admissions

When to Register

Registering for MPC classes is easy! It is recommended that you register as early as possible to get the classes that you want.

SUMMER SEMESTER

June 8 - July 31, 2020

Web Registration (WebReg) at www.mpc.edu open 24 hours per day
Computers and WebReg assistance available in the Student Services Building.

Priority Registration

CONTINUING STUDENTS are students enrolled at MPC during Spring 2020.

RETURNING STUDENTS are students who enrolled at MPC previously, but not in Spring 2020.

NEW AND NEW TRANSFER STUDENTS are students who have never enrolled at MPC.

DUAL ENROLLMENT STUDENTS are students who are currently in grades 6-12.

| PRIORITY | GROUP | PRIORITY DATE |
|-------------------|---|---------------|
| Priority 1 | Active Military, Veterans, Foster Youth, Homeless Youth, ARC, EOPS & CalWORKS. Students must be either continuing MPC students in good standing ¹ (up to 99.9 units ²) or fully matriculated ³ if new or returning | April 13 |
| Priority 2 | Student Athletes, ASMPC Officers and students in the following programs: First Year Experience, Teacher Pathway Program, Umoja, and TRIO. Students must be either continuing MPC students in good standing ¹ (up to 99.9 units ²) or fully matriculated ³ if new or returning | April 14 |
| Priority 3 | Continuing MPC students in good standing ¹ with 30.0-99.9 units in progress and on file | April 15 |
| Priority 4 | Continuing MPC students in good standing ¹ with 0.0-29.5 units in progress and on file | April 16 |
| Priority 5 | New fully matriculated ³ students | April 17 |
| Open Registration | Open Registration for all other New and Returning students, dual enrolled students (grades 6-12), and continuing MPC students with 99.9+ units in progress and on file | April 20 |

¹ **In good standing:** student who is NOT on academic or progress dismissal or who is not on any probation for the last two consecutive semesters (Foster Youth will not lose priority and need to be manually adjusted)

² **100 unit:** once a student reaches 100 units, he/she loses priority limit includes only degree applicable units (MPC courses numbered 1-299)

³ **Fully Matriculated:** Student has completed Assessment, Orientation, and has an Education Plan on file for the term priority registration is for.

Late Registration

June 8-10, 2020

Attend the first class, request an Add Code from the instructor and register using WebReg. Need assistance?
Please visit Admissions & Records in the Student Services Building or call **(831) 646-4002**.

Please note: There are many drawbacks to registering late. Classes would have already begun; the classes you want may already be filled; and counseling will be limited. So register early!

Steps for New Students

New students should complete each of the following steps in order to be cleared for registration.

STEP 1. APPLICATION

Complete application online at www.mpc.edu

- 1) Click on "Apply for Admission"
- 2) Follow the instructions on CCCApply to submit an application.

STEP 2. FINANCIAL AID (OPTIONAL)

Students who need assistance paying their fees are encouraged to submit the FAFSA (fafsa.ed.gov) or DREAM Act (dream.csac.ca.gov) application before they register for classes. See page 8 for more Financial Aid information.

STEP 3. ASSESSMENT & PLACEMENT

Assessment policies have changed in response to Assembly Bill 705. Assessment tests are not required for placement into English or Math courses; however, you will need to complete a placement test for English as a Second Language courses. Please see our website for the most current information and procedures.

See Assessment information at www.mpc.edu/assessment or call (831) 646-4027.

STEP 4. ORIENTATION

Choose one of the following:

- A) Register for PERS 10
- OR**
- B) Complete the orientation online or in person. Please review the following website: www.mpc.edu/orientation or call (831) 646-4845.

STEP 5. COUNSELING/ADVISEMENT (EDUCATION PLAN)

Choose one of the following:

- A) Complete the Education Plan online at: www.mpc.edu/counseling
- OR**
- B) Complete the Education Plan with a counselor. Call (831) 646-4020 for an appointment or make your appointment online through WebReg.

STEP 6. REGISTRATION

Register for classes online, via WebReg at www.mpc.edu



How to Register

Who may use WebReg:

Continuing Students:

Students who enrolled at MPC for the previous term. (Students in grades 6-12 are always considered new and must always submit an Application for Admission and an approved Dual Enrollment Form.)

Returning Students:

Students who enrolled at MPC before, but not the previous term.

New and Transfer Students:

Students who have submitted their Application for Admission. Read the information about the Step Program in this schedule or contact the Counseling Department.

WebReg Clearance:

Students who are not paying their own fees:

Students included in this group are those using Vocational Rehabilitation (Chapter 31), VA CalVet, State Department of Rehabilitation, etc. Students are responsible for all fees unless appropriate forms are received by the Admissions & Records Office within the first two weeks of the term.

Students who have been dismissed from Monterey Peninsula College:

Students must petition for readmission through the Academic Council. Check your petition status on WebReg 48 hours after Academic Council review (2nd and 4th Tuesdays).

Welcome to WebReg

(Web Registration) www.mpc.edu

Registration in more than 18 units:

Students must have counselor approval if registering for more than 18 units in a semester.

U.S. Military Tuition Assistance:

Once the approved Tuition Assistance form is submitted to the Admissions & Records Office, registration may be permitted.

U.S. Military Dependents using nonresident free exemption:

Signatures are required on the U.S. Military Dependent Residence Statement every semester/session of enrollment. Registration fees are the responsibility of the student unless the form is submitted to the Admissions & Records Office within the first two weeks of the term.

International Students:

All students on F-1 or M-1 visas and students not possessing permanent resident visas: Approval from International Student Program office is required.

6th–12th Grade Students:

Students in grades 6-12 and who are at least 12 years of age must complete an Application for Admission and a Dual Enrollment Form. Registration is permitted after both forms are completed and submitted to the Admissions & Records Office. Students in grades 6-8 must have additional approval from the Dean of Student Services. Call (831) 645-1377 to schedule an appointment. No approvals will be granted after the term begins.

Summer 2020 Cost and Payment Information

Course Fees

| | |
|----------------------------|----------------|
| Enrollment Fee | \$46 per unit |
| Nonresident Fee* | \$265 per unit |
| Instructional Material Fee | Varies |

Optional Fees

| | |
|-----------------------------------|------|
| Child Development Center Donation | \$3 |
| Daily Parking Permit | \$3 |
| Annual Parking Permit | N/A |
| Semester Parking Permit | \$26 |

Payment

Students may log into their WebReg portal and pay fees. Additionally, fees may be paid in person at the Fiscal Services Office located in the Administration Building.

*Nonresident and international students are charged both enrollment and nonresident fees per unit for course registration.

Term/Session Fees

| | |
|----------------------------|------|
| Health Fee | \$17 |
| Student Center Use Fee | \$5 |
| Student Body Fee | N/A |
| Student Representative Fee | N/A |

As per the college catalog, all fees and tuition charges are subject to change without prior notification.

For more detailed information on current fees, waivers, and refunds please visit: www.mpc.edu/admissions/fees-payments-refunds

WebReg Worksheet

To access WebReg, Monterey Peninsula College requires students to use their Student ID Number (if known), otherwise students may use their Social Security Number to access their Student Portal.

WebReg Hours:

www.mpc.edu

24 hours per day

WebReg Help Line Hours:

Monday – Thursday: 9:00am - 4:30pm

Friday: 9:00am - 12:00pm

Call (831) 646-4002

Guidelines:

Complete the worksheet on the right of this page before logging in. Have a list of alternate courses, as some of the classes may be closed.

NOTE: *If you were not registered at MPC in the previous term, and have not submitted an Application for Admission for the term you wish to register for, registration will be denied.*

If you have changed your mailing address, telephone number and/or email address, update the information on WebReg.

The fastest, most secure way to pay for classes is through WebReg with a VISA or MasterCard. Need an alternative? There is a drop box outside the Administration Building to drop off payments.

Computers and WebReg assistance available at the Admissions & Records Office in the Student Services Building.

Priority registration for Summer classes begins
April 13, 2020

WebReg Helpline
(831) 646-4002

To Register by WebReg:

- 1: Visit MPC's web site (www.mpc.edu).
- 2: Click on WebReg (at the top of the website).
- 3: For initial entry
 - **ID Number** (enter your SSN if you do not know your student ID number)
 - **PIN** (enter your 8-digit birth date (MMDDYYYY), no spaces)
- 4: Click Login.
- 5: If asked, update your PIN. It is your responsibility to remember the PIN you entered. From this point, you will be using this PIN when accessing your WebReg account.
- 6: You are now in your WebReg account. Update your information, if needed
PLEASE READ THE INSTRUCTIONS PRINTED ON EACH SCREEN
- 7: To register, click on Add/Drop/Register.
- 8: Select the semester/session in which you are registering.
- 9: Enter the 4-digit section number of the class(es) you wish to register into the "Enter Section Number box, click the "Add to Cart" button.

| 4 Digit Section # | Course | Units | Day(s) | Time |
|-------------------|--------|-------|--------|------|
| | | | | |
| | | | | |
| | | | | |
| | | | | |

If the course you entered has the option of being taken for Letter Grade or P/NP (Pass/No Pass), you must now choose the grading option for which you wish to take the course. Click the option of your choice. Consult a counselor with questions.

The information related to the section number you entered appears. If this is the correct course and you wish to add additional courses, click "More Schedule Changes." Continue this process until you have requested all your courses.

If you have chosen the wrong course, click the shopping cart under the Remove button to drop the course.

- 10: After you have enrolled in all your desired courses, continue your registration by clicking on "Checkout"
- 11: The amount of money you owe for this transaction appears. **You must choose a payment option to finalize your registration.** If you clicked on payment to be made by check or cash, please complete the WebReg Payment Slip and submit your payment to Fiscal Services located in the Administration Building.
- 12: **When adding or dropping courses, ALWAYS PRINT YOUR RECEIPT.** This will be your record of the courses that you have added and/or dropped.
- 13: **If you need to make schedule changes at a later time,** you must FIRST drop the courses that you no longer wish to take and then add the classes that you want to take instead.
- 14: If you wish to purchase a Parking Permit, click Purchase Optional Fees. Parking permits will be mailed to students. Make sure your address is current in WebReg. Parking permits will begin to be mailed a few weeks before the term begins. Payment must be received before permits can be mailed out. So order and pay early!

Financial Aid Information

What is Financial Aid?

Financial aid is the money you receive from federal, state and local programs to help you meet the expenses (books, enrollment fee, food, rent, and transportation) of a college education. Student Financial Services provides different types of financial aid, such as grants, scholarships, work-study, and Direct Student Loans. **THE PRIMARY RESPONSIBILITY OF PAYING COLLEGE COSTS RESTS WITH YOU AND YOUR PARENTS.**

Who is eligible?

You do not need to be low-income to be eligible for financial aid, but you must demonstrate financial need. Your financial need is the difference between the cost of attendance and your expected family contribution. If you would like to apply for financial, APPLY NOW!

How do I apply?

To be considered for financial aid, you will need to complete the Free Application for Federal Student Aid (FAFSA) as soon as possible at <https://fafsa.gov> or the Dream Act Application at www.csac.ca.gov/dream_act.asp Student Financial Services will notify you of any required documents to complete your financial aid file or you can check your financial aid portal.

What are the General Eligibility Requirements?

In order to be eligible for federal, state, and institutional financial aid programs, a student must meet the following requirements:

- Must be accepted for admission and enrolled in an eligible academic program.
- Must have a High School Diploma or the equivalent (GED), or have received the California High School Proficiency Examination (CHSPE).
- Must be making satisfactory academic progress (SAP), whether or not you received financial aid.
- Must be a U.S. Citizen or eligible non-citizen with a valid Social Security Number for Federal aid.
- Must be in compliance with Selective Service Registration requirements.
- Must have resolved any drug conviction issues.
- Must not be in default on any Federal Loan Program or in repayment of any Federal Grant Programs.
- Must demonstrate financial need.

What is Financial Aid Satisfactory Academic Progress?

In order to show financial aid satisfactory academic progress during a given semester, you must:

- Earn cumulative grade point averages of at least 2.0 ("C" average);
- Complete 2/3 of the units you attempt cumulatively and complete your degree within the 150% maximum time frame (90 units attempted.)
- For the California College Promise Grant, maintain 2.0 GPA and complete 50% of attempted units each semester and overall.

What are my responsibilities as a student receiving Financial Aid?

As a student receiving financial aid, you are required to:

- Sign up for an MPC email account.
- Notify Student Financial Services of any change in your name, marital status, Social Security Number or income.
- Respond immediately to all correspondence sent to you by the Student Financial Services office, the Federal or State Student Aid Programs.
- Register for your classes, and complete all requirements for financial aid.
- Maintain satisfactory academic progress.

**Please note that it is the student's responsibility to pay any outstanding fees to MPC.*

What is the deadline to apply for Financial Aid?

The Free Application for Federal Student Aid (FAFSA) becomes available October 1st of every year. The application for financial aid has to be completed every year you are planning to attend school. There is a priority deadline which is March 2nd, so it is encouraged to apply early.

How can I check on my status?

There are a few ways to check on your status, They are:

- Visiting the financial aid office in the Student Service Building.
- Sending an email from your MPC email account.
- Through WebReg Portal under My Financial Aid.

When will I know if I am eligible for Financial Aid?

Once you have completed the financial aid application process, your eligibility for financial aid will be determined. Student Financial Services will email you a financial aid award letter. The award letter will inform you of the amount and types of financial aid you will be eligible to receive. If you are not eligible to receive financial aid, Student Financial Services will notify you by email as well.

What about fee waivers?

California College Promise Grant (CCPG):

This California-funded fee waiver program assists students who are classified as California residents with the mandatory Enrollment Fee.

CCPG Method A:

Assists students who are receiving public assistance, or are dependents of a parent on public assistance.

CCPG Method B:

Assists students as determined by the California Income Standards.

CCPG Method C:

Assists students who have completed the FAFSA and have \$1,104 in need. This is determined by Student Financial Services.

MPC PROMISE SCHOLARSHIP:

First Time-Full Time Students, First and Second Year Tuition Free! See website at: www.mpc.edu/promise.

HOW DO I APPLY FOR STUDENT LOANS?

To apply for student loans, you will need to complete the steps listed at: <https://www.mpc.edu/financial-aid/applications/direct-federal-student-loan>

Student Financial Services is located in the Student Services building. Please refer to the Financial Aid website for office hours. Contact Student Financial Services for assistance at (831) 646-4030, send an email to financialaid@mpc.edu, or visit our website at www.mpc.edu/financial-aid.

| SECTION | DAYS | TIME | INSTRUCTOR | ROOM | UNITS | SECTION | DAYS | TIME | INSTRUCTOR | ROOM | UNITS | SECTION | DAYS | TIME | INSTRUCTOR | ROOM | UNITS |
|---------|------|------|------------|------|-------|---------|------|------|------------|------|-------|---------|------|------|------------|------|-------|
|---------|------|------|------------|------|-------|---------|------|------|------------|------|-------|---------|------|------|------------|------|-------|

**DID YOU KNOW
YOU CAN TAKE
COLLEGE CLASSES
WHILE YOU'RE IN
HIGH SCHOOL?**



Summer is a great time to earn college credits and online classes make it convenient to learn on your schedule!



Attend College Tuition Free with the MPC Promise

Monterey Peninsula College is proud to offer the MPC Promise, a free in-state tuition program that will cover all college enrollment fees, for all first-time, first-year and second-year full-time students.

To be eligible, students must:

- Complete the Free Application for Federal Student Aid (FAFSA) or California Dream Act Application
- Enroll full-time at MPC (as defined as 12 units or more for Fall 2019 and continue through Spring 2020)
- Select an educational goal to earn a certificate and/or associate degree, or to transfer to a four-year college or university
- Complete the MPC New Student Orientation and develop a Educational Plan with a counselor

Visit www.mpc.edu/promise to learn more about the MPC Promise.

Need Cash for College?

Over \$400,000 in Scholarship Monies Awarded Annually!

Through the generous gifts from local community members, the MPC Foundation provides over 160 scholarships annually to MPC students and incoming high school graduates through a combination of endowed, named, and unrestricted gifts. Workshops provided in the Fall and Spring to help you complete your application. **All students are welcome to apply.**

Visit www.mpc.edu/scholarships to learn more about MPC scholarships, the application process, and deadlines.



| SECTION | DAYS | TIME | INSTRUCTOR | ROOM | UNITS | SECTION | DAYS | TIME | INSTRUCTOR | ROOM | UNITS | SECTION | DAYS | TIME | INSTRUCTOR | ROOM | UNITS |
|---|------|------|------------|------|-------|---|------|------|------------|------|-------|---|------|------|------------|------|-------|
| SUMMER 2020 CLASS SCHEDULE | | | | | | Anthropology | | | | | | Art - Photography | | | | | |
| Administration Of Justice | | | | | | ANTH 2 INTRODUCTION TO BIOLOGICAL ANTHROPOLOGY | | | | | | ARTP 10 INTRODUCTION TO PHOTOGRAPHY | | | | | |
| ADMJ 2 INTRODUCTION TO ADMINISTRATION OF JUSTICE | | | | | | 0216 8h 25m / wk (06/08-7/17) Michaels G ONLINE 3.0 | | | | | | 0019 MTWTh 9:00am-12:05pm Mettler ONLINE 3.0 (06/08-07/02) - Synchronous Learning | | | | | |
| 8001 6h 20m / wk (06/08-7/31) Turner J ONLINE 3.0 | | | | | | ANTH 4 INTRODUCTION TO CULTURAL ANTHROPOLOGY | | | | | | Art - Studio | | | | | |
| ADMJ 4 CONCEPTS OF CRIMINAL LAW | | | | | | 0137 8h 25m / wk (06/08-7/17) Michaels G ONLINE 3.0 | | | | | | ARTS 11A SKETCH I | | | | | |
| 0088 6h 20m / wk (06/08-7/31) Turner J ONLINE 3.0 | | | | | | Art - Ceramics Technology | | | | | | 0141 TTh 11:00am-3:15pm Gomez G ONLINE 1.5 (06/23-07/30) - Synchronous Learning | | | | | |
| Anatomy | | | | | | ARCE 5 INTRODUCTION TO GLAZE EXPERIMENTATION | | | | | | ARTS 11B SKETCH II | | | | | |
| ANAT 5 HUMAN BIOLOGY | | | | | | 0114 6h 20m / wk (06/08-07/29) Tanous M ONLINE 1.5 | | | | | | 0142 TTh 11:00am-3:15pm Gomez G ONLINE 1.5 (06/23-07/30) - Synchronous Learning | | | | | |
| 0054 6h 20m / wk - Lecture & 6h 20m / wk - Lab (06/08-07/31) Ambaw A ONLINE 4.0 | | | | | | Art - History | | | | | | ARTS 16 LANDSCAPE DRAWING/PAINTING | | | | | |
| 0025 6h 20m / wk - Lecture & 6h 20m / wk - Lab (06/08-07/31) Bard D ONLINE 4.0 | | | | | | ARTH 1 ART APPRECIATION | | | | | | 0081 TTh 12:30pm-4:35pm Thorson C ONLINE 1.5 (06/09-07/16) - Synchronous Learning | | | | | |
| | | | | | | 0003 8h 25m / wk (06/08-7/15) Madsen ONLINE 3.0 | | | | | | ARTS 31 MIXED MEDIA: COLLAGE | | | | | |
| | | | | | | | | | | | | 0083 MW 10:00am-2:05pm Klein E ONLINE 1.0 (06/08-07/01) - Synchronous Learning | | | | | |
| | | | | | | | | | | | | ARTS 84 CHINE COLLE | | | | | |
| | | | | | | | | | | | | 0089 MW 10:00am-2:05pm Klein E ONLINE 1.0 (06/08-07/01) - Synchronous Learning | | | | | |



STUDIO ARTISTS

Though our summer courses will be delivered entirely online, we look forward to teaching you in-person again and can't wait to welcome you back to the studio this fall. In the meantime, *keep creating!*

- MPC Creative Arts Faculty

Automotive Technology

| SECTION | DAYS | TIME | INSTRUCTOR | ROOM | UNITS |
|-----------------|---|--|------------|--------|-------|
| AUTO 102 | BASIC AUTOMOTIVE ELECTRICITY AND ELECTRONICS | | | | |
| 0122 | 7h | 25m / wk - Lecture & 4h 15m / wk - Lab | Lawrence J | ONLINE | 4.0 |
| | | (06/08-07/31) | Lawrence J | ONLINE | |

Biology

| SECTION | DAYS | TIME | INSTRUCTOR | ROOM | UNITS |
|----------------|---|----------------|------------|--------|-------|
| BIOL 26 | APPLIED MICROBIOLOGY LABORATORY | | | | |
| 0105 | 8h | 25m / wk | Craig H | ONLINE | 1.0 |
| | | (06/09-07/16) | | | |
| 0106 | 8h | 25m / wk | Craig H | ONLINE | 1.0 |
| | | (06/09-07/16) | | | |
| 0110 | 8h | 25m / wk | Craig H | ONLINE | 1.0 |
| | | (06/09-07/16) | | | |
| BIOL 31 | ENVIRONMENTAL SCIENCE | | | | |
| 8031 | 6h | 20m / wk | Raskoff K | ONLINE | 3.0 |
| | | (06/08-07/31) | | | |
| BIOL 32 | ENVIRONMENTAL SCIENCE LABORATORY | | | | |
| 0184 | MW | 9:30am-12:35pm | Staff | LS104 | 1.0 |
| | | (06/08-07/29) | | | |

Business

| SECTION | DAYS | TIME | INSTRUCTOR | ROOM | UNITS |
|----------------|----------------------------------|---------------|------------|--------|-------|
| BUSI 1A | FINANCIAL ACCOUNTING | | | | |
| 8342 | 8h | 25m / wk | Roberts C | ONLINE | 4.0 |
| | | (06/08-07/31) | | | |
| BUSI 18 | BUSINESS LAW | | | | |
| 0168 | 6h | 20m / wk | Castillo L | ONLINE | 3.0 |
| | | (06/08-07/31) | | | |
| 8033 | 6h | 20m / wk | Castillo L | ONLINE | 3.0 |
| | | (06/08-07/31) | | | |
| BUSI 20 | INTRODUCTION TO BUSINESS | | | | |
| 0132 | 6h | 20m / wk | Gravelle K | ONLINE | 3.0 |
| | | (06/08-07/31) | | | |
| 0247 | 6h | 20m / wk | Gravelle K | ONLINE | 3.0 |
| | | (06/08-07/31) | | | |
| BUSI 50 | INTRODUCTION TO MARKETING | | | | |
| 0117 | 6h | 20m / wk | Barrie B | ONLINE | 3.0 |
| | | (06-08-07/31) | | | |

Business Skills Center

| SECTION | DAYS | TIME | INSTRUCTOR | ROOM | UNITS |
|-----------------|--|---------------|------------|--------|-------|
| BUSC 109 | KEYBOARDING FOR COMPUTERS | | | | |
| 0101 | 8h | 25m / wk | Walker J | ONLINE | 1.0 |
| | | (06/15-07/24) | | | |
| BUSC 150 | MICROSOFT EXCEL 2013: INTRO TO SPREADSHEETS I | | | | |
| 0031 | 8h | 25m / wk | Walker J | ONLINE | 1.0 |
| | | (06/15-07/24) | | | |

Chemistry

| SECTION | DAYS | TIME | INSTRUCTOR | ROOM | UNITS |
|-----------------|---|---|------------|--------|-------|
| CHEM 1B | GENERAL CHEMISTRY II | | | | |
| 8038 | 7h | 15m / wk - Lecture & 14h 30m / wk - Lab | Rivera F | ONLINE | 5.0 |
| | | (06/08-07/24) | Rivera F | ONLINE | |
| 8426 | 7h | 15m / wk - Lecture & 14h 30m / wk - Lab | Rivera F | ONLINE | 5.0 |
| | | (06/08-07/24) | Rivera F | ONLINE | |
| CHEM 2 | FUNDAMENTAL CHEMISTRY | | | | |
| 8039 | 8h | 25m / wk - Lecture & 8h 25m / wk - Lab | Bishop M | ONLINE | 4.0 |
| | | (06/08-07/16) | Bishop M | ONLINE | |
| CHEM 10 | EVERYDAY CHEMISTRY | | | | |
| 8343 | 6h | 20m / wk - Lecture & 6h 20m / wk - Lab | Bishop M | ONLINE | 4.0 |
| | | (06/06-07/25) | Bishop M | ONLINE | |
| CHEM 30A | INTRODUCTORY CHEMISTRY FOR HEALTH SCIENCES | | | | |
| 0121 | 8h | 25m / wk - Lecture & 8h 25m / wk - Lab | McDonald W | ONLINE | 4.0 |
| | | (06/08-07/16) | McDonald W | ONLINE | |
| 0273 | 8h | 25m / wk - Lecture & 8h 25m / wk - Lab | McDonald W | ONLINE | 4.0 |
| | | (06/08-07/16) | McDonald W | ONLINE | |

Computer Science and Information Systems

| SECTION | DAYS | TIME | INSTRUCTOR | ROOM | UNITS |
|-----------------|--|---------------|------------|--------|-------|
| CSIS 1 | COMPUTER INFORMATION SYSTEMS | | | | |
| 0075 | 10h | 35m / wk | Singh D | ONLINE | 3.0 |
| | | (06/08-07/31) | | | |
| 0224 | 10h | 35m / wk | Singh D | ONLINE | 3.0 |
| | | (06/08-07/31) | | | |
| CSIS 9 | PROGRAMMING FUNDAMENTALS: PYTHON | | | | |
| 0297 | 10h | 35m / wk | Stoykov A | ONLINE | 3.0 |
| | | (06/08-07/31) | | | |
| CSIS 10A | PROGRAMMING METHODS I: JAVA | | | | |
| 8347 | 8h | 25m / wk | Rebold T | ONLINE | 3.0 |
| | | (06/08-07/31) | | | |
| CSIS 50 | MS OFFICE APPLICATIONS | | | | |
| 8042 | 4h | 15m / wk | Stewart M | ONLINE | 2.0 |
| | | (06/08-07/31) | | | |
| CSIS 50L | MS OFFICE APPLICATIONS LAB | | | | |
| 8043 | 6h | 20m / wk | Stewart M | ONLINE | 1.0 |
| | | (06/08-07/31) | | | |
| CSIS 86 | NETWORK SECURITY FUNDAMENTALS/ SECURITY+ PREP | | | | |
| 0203 | 12h | 40m / wk | Singh D | ONLINE | 3.0 |
| | | (06/08-07/31) | | | |



COOPERATIVE WORK EXPERIENCE

WORK • LEARN • EARN

Earn college credits while gaining work experience. Simply contact the Cooperative Education department and we will get you on the path to success!

ASK US:

- How to find an internship
- How to use your current job for college credit
- How to get started

Contact:
Maj-Britt Kimm or Lindsay Peelman
mpc_coop@mpc.edu

Dental Assisting

| SECTION | DAYS | TIME | INSTRUCTOR | ROOM | UNITS |
|-----------------|---------------------------------------|---|------------|--------|-------|
| DNTL 116 | SUPERVISED CLINICAL EXPERIENCE | | | | |
| 0125 | 1h | 5m / wk - Lecture & 29h 50m / wk - Lab (CLINIC) | Hopkins | ONLINE | 5.0 |
| | | (06/08-07/31) | Carpenetti | | |

Early Childhood Education

| SECTION | DAYS | TIME | INSTRUCTOR | ROOM | UNITS |
|-----------------|--|---------------|------------|--------|-------|
| ECED 1 | CHILD GROWTH AND DEVELOPMENT | | | | |
| 0126 | 6h | 20m / wk | Galer K | ONLINE | 3.0 |
| | | (06/08-07/31) | | | |
| ECED 51 | PRINCIPLES AND PRACTICES OF TEACHING YOUNG CHILDREN | | | | |
| 0145 | 6h | 20m / wk | Milovich | ONLINE | 3.0 |
| | | (06/08-07/31) | | | |
| ECED 55 | CHILD, FAMILY, AND COMMUNITY | | | | |
| 0028 | 6h | 20m / wk | Thompson J | ONLINE | 3.0 |
| | | (06/08-07/31) | | | |
| ECED 63B | CURRICULUM STRATEGIES FOR CHILDREN WITH SPECIAL NEEDS | | | | |
| 0049 | 8h | 25m / wk | Oswald A | ONLINE | 3.0 |
| | | (06/08-07/16) | | | |



Ready, Set, Transfer!

Discover MPC's First Year Experience

Visit MPC's new "EL CENTRO" on the Monterey Campus to discover new resources and services designed to increase opportunities and improve the educational achievements of Hispanic students and underrepresented students.

The resources and services provided through "EL CENTRO" are designed to help students excel academically and provide them with a continuum of support pre and post-transfer to improve student success and degree completion.

Visit "EL CENTRO" at MPC to find out how you can get involved in transfer-oriented activities, special integrated pathways to CSUMB like the new Teacher Pathway Program (TPP), and MPC's Jump Start Summer Program!!

High School Graduates, visit www.mpc.edu/jumpstart to learn about our upcoming 2020 Jump Start Summer Program!



EARNING DEGREES
TRANSFER READINESS
CAREER PREPARATION

**TRANSFORMING, ENRICHING,
AND ADVANCING LIVES OF STUDENTS**

UMOJA (A Kiswahili word meaning unity) is a learning community and a critical resource dedicated to enhancing the cultural and educational experiences of African American and other students.

MPC's Umoja community is dedicated to the academic success, personal growth, career development, and self-actualization of MPC students through the integration of academics, student support services, and African-American culture.

SECTION DAYS TIME INSTRUCTOR ROOM UNITS

Economics

| | | | | | |
|--|---------------|----------|--------|-----|--|
| ECON 2 PRINCIPLES OF ECONOMICS: MACRO | | | | | |
| 8350 | 8h 25m / wk | Saha S | ONLINE | 3.0 | |
| | (06/08-07/16) | | | | |
| ECON 4 PRINCIPLES OF ECONOMICS: MICRO | | | | | |
| 8046 | 8h 25m / wk | Morgan D | ONLINE | 3.0 | |
| | (06/08-7/16) | | | | |

English

| | | | | | |
|---|---------------|------------|--------|-----|--|
| ENGL 1A COLLEGE COMPOSITION | | | | | |
| 0096 | 8h 25m / wk | Penney | ONLINE | 3.0 | |
| | (06/08-07/17) | | | | |
| 0107 | 8h 25m / wk | Watson L | ONLINE | 3.0 | |
| | (06/08-07/17) | | | | |
| 0207 | 8h 25m / wk | Wehner K | ONLINE | 3.0 | |
| | (06/08-07/17) | | | | |
| 8107 | 8h 25m / wk | McMillen J | ONLINE | 3.0 | |
| | (06/08-07/17) | | | | |
| 8351 | 8h 25m / wk | Revivo R | ONLINE | 3.0 | |
| | (06/08-07/17) | | | | |
| ENGL 2 ARGUMENTATIVE WRITING AND CRITICAL THINKING | | | | | |
| 0037 | 8h 25m / wk | Wehner K | ONLINE | 3.0 | |
| | (06/08-07/17) | | | | |
| 0307 | 8h 25m / wk | Young D | ONLINE | 3.0 | |
| | (06/08-07/17) | | | | |
| 0040 | 8h 25m / wk | Eubanks K | ONLINE | 3.0 | |
| | (06/08-07/17) | | | | |
| 8113 | 8h 25m / wk | Eubanks K | ONLINE | 3.0 | |
| | (06/08-07/17) | | | | |

English & Study Skills and Reading Center

“The first draft is just for telling yourself the story.”

~ Terry Pratchett

Our instructional team is here to help you get there.

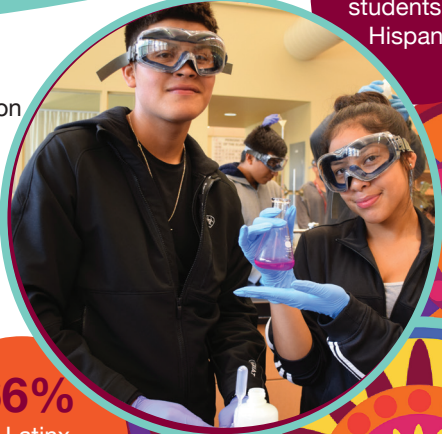
Free online tutoring in all communication skills

Visit www.mpc.edu/essc for additional information and hours of operation.



MPC is proud to be a **HISPANIC SERVING INSTITUTION**

42%
Of MPC students are Hispanic



- Improve placement and progression of underserved students
- Build a transfer culture that promotes degree completion
- Strengthen a connection between MPC and CSU Monterey Bay

follow us on Instagram

@hsi_mpc

#somosmpc #goldbos #mpchsi

66%
Of Latinx Students attend HSI's

ENGL 300 PERSONALIZED WRITING INSTRUCTION

| | | | | | |
|------|---------------|----------|--------|-----|--|
| 8121 | 4h 15m / wk | Jensen K | ONLINE | 0.5 | |
| | (06/08-07/16) | | | | |

ENGL 351 COLLEGE READING STRATEGIES I

| | | | | | |
|------|---------------|----------|--------|-----|--|
| 8132 | 3h 10m / wk | Jensen K | ONLINE | 0.5 | |
| | (06/08-07/30) | | | | |

ENGL 352 COLLEGE READING STRATEGIES II

| | | | | | |
|------|---------------|----------|--------|-----|--|
| 8133 | 3h 10m / wk | Jensen K | ONLINE | 0.5 | |
| | (06/08-07/30) | | | | |

ENGL 400 ACADEMIC SUPPORT

| | | | | | |
|------|---------------|----------|--------|-----|--|
| 8134 | 4h 15m / wk | Jensen K | ONLINE | 0.0 | |
| | (06/08-07/16) | | | | |

English As A Second Language

ENSL 326 ENGLISH SKILLS FOR SUCCESS I

| | | | | | |
|------|---------------|------------|--------|-----|--|
| 0043 | 6h 20m / wk | Williams S | ONLINE | 3.0 | |
| | (06/08-07/31) | | | | |

| | | | | | |
|------|---------------|---------|--------|-----|--|
| 0093 | 8h 25m / wk | Brady B | ONLINE | 3.0 | |
| | (06/08-07/17) | | | | |

ENSL 426 ENGLISH SKILLS FOR SUCCESS

| | | | | | |
|------|---------------|------------|--------|-----|--|
| 0044 | 6h 20m / wk | Williams S | ONLINE | 3.0 | |
| | (06/08-07/31) | | | | |

| | | | | | |
|------|---------------|---------|--------|-----|--|
| 0094 | 8h 25m / wk | Brady B | ONLINE | 3.0 | |
| | (06/08-07/17) | | | | |

Ethnic Studies

ETNC 4 MEXICAN-AMERICAN ART IN AMERICAN CULTURE

| | | | | | |
|------|---------------|-------|--------|-----|--|
| 0064 | 8h 25m / wk | Staff | ONLINE | 3.0 | |
| | (06/08-07/16) | | | | |

ETNC 5 AFRICAN-AMERICAN ARTS AND MUSIC IN AMERICAN CULTURE

| | | | | | |
|------|---------------|-----------|--------|-----|--|
| 0076 | 6h 20m / wk | Cabrera V | ONLINE | 3.0 | |
| | (06/08-07/31) | | | | |

| | | | | | |
|------|---------------|-----------|--------|-----|--|
| 0027 | 6h 20m / wk | Cabrera V | ONLINE | 3.0 | |
| | (06/08-07/31) | | | | |

ETNC 10 INTRODUCTION TO SOCIAL JUSTICE

| | | | | | |
|------|---------------|-----------|--------|-----|--|
| 0074 | 6h 20m / wk | Cabrera V | ONLINE | 3.0 | |
| | (06/08-07/31) | | | | |

ETNC 24 AFRICAN AMERICANS IN UNITED STATES HISTORY TO 1865

| | | | | | |
|------|---------------|----------|--------|-----|--|
| 0065 | 6h 20m / wk | Serena D | ONLINE | 3.0 | |
| | (06/08-07/31) | | | | |

ETNC 45 INTRODUCTION TO LANGUAGE AND SOCIETY

| | | | | | |
|------|---------------|---------|--------|-----|--|
| 0004 | 8h 25m / wk | Abend R | ONLINE | 3.0 | |
| | (06/08-07/17) | | | | |

French

FREN 1A ELEMENTARY FRENCH I

| | | | | | |
|------|---------------|------------|--------|-----|--|
| 0130 | 10h 35m / wk | Gonzales L | ONLINE | 5.0 | |
| | (06/08-07/30) | | | | |

MPC WELCOMES INTERNATIONAL STUDENTS

From over 26 countries, MPC assists students attending on F-1 visas and offers a variety of academic programs to meet the diverse needs of the international and guest students. Students can earn an Associate degree then transfer to a four-year university or complete Optional Practical Training where you can work in your field of study anywhere in the United States for up to one year.

SUBMIT AN APPLICATION NOW!

Fall 2020 application period:

March 1st — July 1st

Spring 2021 application period:

September 1st — November 30th

For more information visit us at www.mpc.edu/isp.

Contact info: (831) 645-1357 or internationalcenter@mpc.edu



Get a Head Start on Fall with “Ready to Work” Programs



Automotive



Business



Computer Science



Early Childhood Education



Hospitality



Medical Assisting



Real Estate



| SECTION | DAYS | TIME | INSTRUCTOR | ROOM | UNITS |
|---------|------|------|------------|------|-------|
|---------|------|------|------------|------|-------|



COMPLETE YOUR SCIENCE REQUIREMENTS ONLINE THIS SUMMER!

- ANAT 5 Human Biology
- BIOL 26 Applied Micro-Biology Lab
- BIOL 31 & 32 Environmental Science & Lab
- CHEM 1B Chemistry II
- CHEM 2 Fundamental Chemistry
- CHEM 10 & 10L Everyday Chemistry & Lab
- CHEM 30A Chemistry for Health Sciences
- GEOL 9 Earth Catastrophes/Disasters
- GEOL 2 & 2L Physical Geology & Lab



Gender & Women's Studies

| | | | | | |
|--|-------------|---------------|-----------|--------|-----|
| GWOS 1 INTRODUCTION TO GENDER AND WOMEN'S STUDIES | | | | | |
| 0013 | 8h 25m / wk | (06/08-07/17) | Davis D | ONLINE | 3.0 |
| GWOS 10 GENDER IN AMERICAN POLITICS | | | | | |
| 0050 | 8h 25m / wk | (06/08-07/17) | Davis D | ONLINE | 3.0 |
| GWOS 12 WOMEN IN UNITED STATES HISTORY | | | | | |
| 0324 | 8h 25m / wk | (06/08-07/17) | Davis D | ONLINE | 3.0 |
| 8312 | 6h 20m / wk | (06/08-07/31) | Cabrera K | ONLINE | 3.0 |

Geology

| | | | | | |
|--------------------------------|-------------|---------------|---------------|--------|-----|
| GEOL 2 PHYSICAL GEOLOGY | | | | | |
| 0160 | 6h 20m / wk | (06/08-07/30) | Garcia Garcia | ONLINE | 3.0 |
| 8149 | 6h 20m / wk | (06/08-07/30) | Garcia Garcia | ONLINE | 3.0 |

| SECTION | DAYS | TIME | INSTRUCTOR | ROOM | UNITS |
|---------|------|------|------------|------|-------|
|---------|------|------|------------|------|-------|

| | | | | | |
|--|-------------|---------------|---------------|--------|-----|
| GEOL 2L PHYSICAL GEOLOGY LABORATORY | | | | | |
| 0284 | 6h 20m / wk | (06/08-07/30) | Garcia Garcia | ONLINE | 1.0 |
| 0285 | 6h 20m / wk | (06/08-07/30) | Garcia Garcia | ONLINE | 1.0 |
| GEOL 9 EARTH CATASTROPHES AND DISASTERS | | | | | |
| 0052 | 8h 25m / wk | (06/08-07/16) | Turrini Smith | ONLINE | 3.0 |

Health

| | | | | | |
|------------------------------|-------------|---------------|-----------|--------|-----|
| HLTH 4 HEALTHY LIVING | | | | | |
| 0030 | 6h 20m / wk | (06/08-07/31) | Shirley K | ONLINE | 3.0 |

History

| | | | | | |
|---|-------------|---------------|-----------|--------|-----|
| HIST 12 WOMEN IN UNITED STATES HISTORY | | | | | |
| 0325 | 8h 25m / wk | (06/08-07/17) | Davis D | ONLINE | 3.0 |
| 8152 | 6h 20m / wk | (06/08-07/31) | Cabrera K | ONLINE | 3.0 |
| HIST 17 UNITED STATES HISTORY TO 1877 | | | | | |
| 0086 | 6h 20m / wk | (06/08-07/31) | Staff | ONLINE | 3.0 |
| 8380 | 8h 25m / wk | (06/08-07/17) | Staff | ONLINE | 3.0 |
| HIST 18 UNITED STATES HISTORY FROM 1865 | | | | | |
| 0087 | 8h 25m / wk | (06/08-07/17) | Finell J | ONLINE | 3.0 |
| 0235 | 8h 25m / wk | (06/08-07/17) | Finell J | ONLINE | 3.0 |
| HIST 24 AFRICAN AMERICANS IN UNITED STATES HISTORY TO 1865 | | | | | |
| 0067 | 6h 20m / wk | (06/08-07/31) | Serena D | ONLINE | 3.0 |

Hospitality

| | | | | | |
|---|---|---------------|------------|--------|-----|
| HOSP 21 URBAN AGRICULTURE CULINARY ARTS | | | | | |
| 0012 | 2h 10m / wk - Lecture & 3h 10m - wk - Lab | (06/08-07/31) | Caughman J | ONLINE | 1.5 |
| HOSP 51 INTRODUCTION TO THE HOSPITALITY INDUSTRY | | | | | |
| 0109 | 6h 20m / wk | (06/08-07/31) | Caughman J | ONLINE | 1.5 |

Interdisciplinary Studies

| | | | | | |
|--|--------------|---------------|-------|--------|-----|
| INDS 440 INTRODUCTION TO THE MONTEREY STATE HISTORICAL PARK | | | | | |
| 8156 | 18h 35m / wk | (06/08-07/31) | Mar S | ONLINE | 0.0 |

| SECTION | DAYS | TIME | INSTRUCTOR | ROOM | UNITS |
|---------|------|------|------------|------|-------|
|---------|------|------|------------|------|-------|

| | | | | | |
|--------------------------------------|--------------|---------------|---------|--------|-----|
| Japanese | | | | | |
| JPNS 1A ELEMENTARY JAPANESE I | | | | | |
| 0169 | 10h 35m / wk | (06/08-07/31) | Ogaki T | ONLINE | 5.0 |

Law Enforcement Training Program

For more information on these and other Law Enforcement Training courses, please visit the South Bay Regional Public Safety Training Consortium website at <http://theacademy.ca.gov/> or call (408) 229-4299.

| | | | | | |
|---|--|---------------|--------------|--------|------|
| LETP 132 ORGANIZATIONAL LEADERSHIP | | | | | |
| 0330 | MTWThF 8:00am-11:50am & MTWThF 1:00pm-6:00pm | (06/15-07/02) | Vaughn Linda | SPS104 | 4.0 |
| LETP 140 PC 832 LAWS OF ARREST | | | | | |
| 0346 | MTWThF 8:00am-11:50am & MTWThF 1:00pm-4:50pm | (06/22-06/26) | Vaughn Linda | SNJOSE | 1.0 |
| LETP 144A P.O.S.T. INTENSIVE BASIC ACADEMY I | | | | | |
| 0178 | MTWThF 8:00am-11:50am & MTWThF 1:00pm-4:30pm | (04/27-07/15) | Vaughn Linda | SNJOSE | 11.0 |
| 0257 | MTWThF 8:00am-11:50am & MTWThF 1:00pm-4:20pm | (04/20-07/09) | Vaughn Linda | SNJOSE | 11.0 |
| LETP 144B P.O.S.T. INTENSIVE BASIC ACADEMY II | | | | | |
| 0078 | 34h 5m / wk | (05/14-08/06) | Vaughn Linda | SNJOSE | 11.0 |
| 0180 | 34h 5m / wk | (05/02-06/26) | Vaughn Linda | SPS104 | 11.0 |
| LETP 145A P.O.S.T. BASIC ACADEMY II | | | | | |
| 0303 | MTWThF 8:00am-11:20am | (04/13-06/15) | Vaughn Linda | SNJOSE | 4.0 |
| LETP 146 BASIC POLICE REQUALIFICATION COURSE | | | | | |
| 0149 | 45h 20m / wk | (06/01-06/19) | Vaughn Linda | SNJOSE | 3.0 |
| LETP 180 CITIZEN'S ACADEMY | | | | | |
| 0202 | 2h 25m / wk | (04/28-07/21) | Vaughn Linda | SNJOSE | 0.5 |
| LETP 204 INVESTIGATION CORE | | | | | |
| 0008 | MTWThF 8:00am-11:50am & MTWThF 1:00pm-4:50pm | (06/01-06/12) | Vaughn Linda | SNJOSE | 2.0 |
| LETP 205 OFFICER INVOLVED SHOOTING AND DEATH INVESTIGATION | | | | | |
| 0001 | 39H 50m / wk | (06/22-06/26) | Vaughn Linda | SNJOSE | 1.0 |

Summer 2020

| SECTION | DAYS | TIME | INSTRUCTOR | ROOM | UNITS | SECTION | DAYS | TIME | INSTRUCTOR | ROOM | UNITS | SECTION | DAYS | TIME | INSTRUCTOR | ROOM | UNITS | |
|---|--------|---|--------------|--------|-------|--|--------|---|--------------|--------|-------|--|--------|--|--------------|--------|-------|--|
| LETP 223 DRIVER TRAINING INSTRUCTOR | | | | | | LETP 234 ADVANCED OFFICER SKILLS I | | | | | | LETP 250 ARREST AND CONTROL/DRIVING (PSP) | | | | | | |
| 0191 | | 39h 40m / wk (07/06-07/10) | Vaughn Linda | SNJOSE | 1.0 | 0161 | | 22h 0m / wk (06/17-06/19) | Vaughn Linda | SNJOSE | 0.5 | 0198 | MTThF | 8:00am-3:30pm (04/16-06/19) | Vaughn Linda | SNJOSE | 0.5 | |
| LETP 224 DRIVER AWARENESS INSTRUCTOR | | | | | | 0163 | MTWThF | 8:00am-11:50am & MTWThF 1:00pm-4:50pm (06/15-06/19) | Vaughn Linda | SNJOSE | 1.0 | LETP 254 DISPATCH FIELD TRAINING PROGRAM | | | | | | |
| 0332 | | 32h 45m / wk (06/16-06/18) | Vaughn Linda | SNJOSE | 0.5 | 0226 | MT | 8:00am-4:05pm (06/22-06/23) | Vaughn Linda | SNJOSE | 0.5 | 0144 | | 39h 30m / wk (03/30-06/12) | Vaughn Linda | SNJOSE | 12.0 | |
| LETP 231.95 OFFICER SAFETY - FIELD TACTICS | | | | | | 0266 | | 40h 0m / wk (06/15-06/19) | Vaughn Linda | SNJOSE | 1.0 | LETP 280.1 SUPERVISOR COURSE | | | | | | |
| 0193 | WThF | 8:00am-2:30pm (07/29-07/31) | Vaughn Linda | SNJOSE | 0.5 | LETP 240.25 SUPERVISORY UPDATE | | | | | | 0300 | MTWThF | 8:00am-11:50pm & MTWThF 1:00pm-4:50pm (6/08-06/19) | Vaughn Linda | SNJOSE | 2.0 | |
| 0194 | WThF | 8:00am-2:30pm (06/10-06/12) | Vaughn Linda | SNJOSE | 0.5 | 0260 | MTW | 8:00am-2:25pm (06/22-06/24) | Vaughn Linda | SNJOSE | 0.5 | LETP 280.2 FIELD TRAINING OFFICER | | | | | | |
| LETP 232 ADVANCED PEACE OFFICER TRAINING | | | | | | LETP 242 PEACE OFFICER ASSOCIATION TRAINING | | | | | | 0241 | | 40h 0m / wk (07/20-07/24) | Vaughn Linda | SNJOSE | 1.0 | |
| 0231 | | 39h 0m / wk (06/30-07/02) | Vaughn Linda | SNJOSE | 0.5 | 0288 | | 3h 50m / wk (06/29-08/08) | Vaughn Linda | SNJOSE | 0.5 | LETP 280.3 FIELD TRAINING OFFICER UPDATE | | | | | | |
| 0306 | MTWThF | 8:00am-3:05pm (07/28-08/12) | Vaughn Linda | SNJOSE | 2.0 | LETP 245 FIELD TRAINING PROGRAM | | | | | | 0269 | | 23h 50m / wk (07/20-07/24) | Vaughn Linda | SNJOSE | 0.5 | |
| LETP 233.4 ADVANCED S.W.A.T. TEAM LEADER | | | | | | 0200 | | 36h 40m / wk (4/06-07/13) | Vaughn Linda | SNJOSE | 15.0 | LETP 290 INSTRUCTOR DEVELOPMENT | | | | | | |
| 0347 | | 48h 5m / wk & 48h m / wk (07/06-07/10) | Vaughn Linda | SNJOSE | 0.5 | 0329 | | 37h 35m / wk | Vaughn Linda | SNJOSE | 14.0 | 0177 | | 41h 35m / wk (07/20-07/24) | Vaughn Linda | SNJOSE | 1.0 | |
| LETP 233.7 DEFENSIVE TACTICS INSTRUCTOR | | | | | | LETP 246 INTERMEDIATE FIELD TRAINING | | | | | | 0309 | MTWTh | 8:00am-12:50pm & MTWTh 1:00pm-5:50pm (6/29-07/02) | Vaughn Linda | SNJOSE | 1.0 | |
| 0159 | MTWThF | 8:00am-11:50am & MTWThF 1:00pm-4:50pm (06/08-06/19) | Vaughn Linda | SNJOSE | 2.0 | 0204 | | 34h 0m / wk (06/22-07/27) | Vaughn Linda | SNJOSE | 4.0 | LETP 247 ADVANCED FIELD TRAINING | | | | | | |
| | | | | | | 0158 | | 34h 0m / wk (06/18-07/23) | Vaughn Linda | SNJOSE | 4.0 | | | | | | | |

MPC's Public Safety Training Center (PSTC) in Seaside provides public safety training programs including fire, police, and emergency medical technician (EMT) training.



MPC PUBLIC SAFETY TRAINING CENTER
2642 Colonel Durham Street

Visit www.mpc.edu/pstc
for more information

| SECTION | DAYS | TIME | INSTRUCTOR | ROOM | UNITS | SECTION | DAYS | TIME | INSTRUCTOR | ROOM | UNITS | SECTION | DAYS | TIME | INSTRUCTOR | ROOM | UNITS |
|---------|------|------|------------|------|-------|---------|------|------|------------|------|-------|---------|------|------|------------|------|-------|
|---------|------|------|------------|------|-------|---------|------|------|------------|------|-------|---------|------|------|------------|------|-------|

FREE MATH & SCIENCE TUTORING

MPC Offers Summer Academic Support for Math and Science Courses!

MATH LEARNING CENTER (MLC)

Math students enrolled in:

- MATH 260 Pre-statistics
- MATH 263 Intermediate Algebra
- MATH 13 Pre-calculus
- MATH 16 Statistics

Visit www.mpc.edu/mlc for more information and hours of operation.

SCIENCE, TECHNOLOGY, ENGINEERING, & MATH COHORT ENHANCED LEARNING (STEM-CEL)

STEM students enrolled in:

- | | | | |
|----------|------------------------------|----------|-------------------------|
| ANAT 5 | Human Biology | GEOL 2 | Physical Geology |
| CHEM 1B | General Chemistry | MATH 20A | Calculus I |
| CHEM 2 | Fundamental Chemistry | MATH 20B | Calculus II |
| CHEM 10 | Everyday Chemistry | PHYS 10 | Introduction to Physics |
| CHEM 30A | Chemistry for Health Science | | |

Visit www.mpc.edu/stemcel for more information and hours of operation.

Learning Skills

LNSK 347A BEGINNING ASSISTIVE TECHNOLOGY PROJECTS

0176 6h 20m / wk Copeland A ONLINE 1.0
(06/08-07/15)

LNSK 410 JOB READINESS

0138 28h 15m / wk Jaros NBI 0.0
(06/08-07/31)

0139 28h 15m / wk Phillips SA HOPE 0.0
(06/08-07/31)

Library Services

LIBR 50 INTRODUCTION TO LIBRARY AND RESEARCH SKILLS

0077 8h 25m / wk Easton ONLINE 1.0
(06/08-07/17)

0079 8h 25m / wk Tozier G ONLINE 1.0
(06/08-07/17)

0080 8h 25m / wk Easton ONLINE 1.0
(06/08-07/17)

Linguistics

LING 15 INTRODUCTION TO LINGUISTICS

8005 8h 25m / wk Abend ONLINE 3.0
(06/08-07/17)

8006 8h 25m / wk Abend ONLINE 3.0
(06/08-07/17)

LING 25 INTRODUCTION TO LANGUAGE AND GENDER

0301 8h 25m / wk Abend ONLINE 3.0
(06/08-07/17)

LING 45 INTRODUCTION TO LANGUAGE AND SOCIETY

0006 8h 25m / wk Abend ONLINE 3.0
(06/08-07/17)

Mathematics

Math Learning Center

Starts June 8th, 2020 for Summer!

Free, online tutoring for all MPC students taking a math class below Calculus.

Books and calculators also available for check-out!

For additional information, call (831) 646-1330 or email mlc@mpc.edu or visit: www.mpc.edu/mlc

MATH 13 PRE-CALCULUS

8209 12h 10m / wk Bishop E ONLINE 5.0
(06/08-07/22)

8210 12h 10m / wk Ramirez M ONLINE 5.0
(06/08-07/22)

MATH 16 ELEMENTARY STATISTICS

0219 11h 20m / wk Spence L ONLINE 4.0
(06/08-07/17)

8212 11h 20m / wk Cristobal ONLINE 4.0
(06/08-07/17)

8215 11h 20m / wk Spence L ONLINE 4.0
(06/08-07/17)

8382 11h 20m / wk Spence L ONLINE 4.0
(06/08-07/17)

0210 11h 20m / wk Acevedo-Arre ONLINE 4.0
(06/08-07/16)

8214 11h 20m / wk Cristobal ONLINE 4.0
(06/08-07/16)

MATH 20A CALCULUS WITH ANALYTIC GEOMETRY I

8216 12h 10m / wk Northrup C ONLINE 5.0
(06/08-07/22)

8217 12h 10m / wk Northrup C ONLINE 5.0
(06/08-07/22)

| SECTION | DAYS | TIME | INSTRUCTOR | ROOM | UNITS | SECTION | DAYS | TIME | INSTRUCTOR | ROOM | UNITS | SECTION | DAYS | TIME | INSTRUCTOR | ROOM | UNITS |
|--|------|---------------------------|------------|--------|-------|--|---|--|----------------------|--------|-------|---|------|------|------------|------|-------|
| MATH 20B CALCULUS WITH ANALYTIC GEOMETRY II | | | | | | Nursing | | | | | |  <p>LAUNCH YOUR Health Career at MPC IN TWO YEARS</p> <p>Available Programs</p> <ul style="list-style-type: none"> • Dental Assisting • Massage Therapy • Medical Assisting • Medical Insurance and Coding • Medical Office Administration • Nutrition and Food <p>New Program Coming Soon!</p> <p>Community Health Worker</p> <p>Community Health Workers (CHWs) work with individuals and groups to promote health knowledge and self-sufficiency through outreach, community education, informal counseling, social support and advocacy.</p> <p>Visit www.mpc.edu/meda to learn more.</p> | | | | | |
| 8218 | 12h | 10m / wk (06/08-07/22) | Riordan E | ONLINE | 5.0 | NURS 65 NURSING ROLE TRANSITION | | | | | | | | | | | |
| MATH 260 PRE-STATISTICS | | | | | | 0155 | 6h | 20m / wk (06.08-07/31) | Bingaman Rondez C | ONLINE | 3.0 | | | | | | |
| 0029 | 12h | 10m / wk (06/08-07/22) | Lopez D | ONLINE | 5.0 | NURS 100 PHARMACOLOGY FOR NURSING | | | | | | | | | | | |
| MATH 263 INTERMEDIATE ALGEBRA AND COORDINATE GEOMETRY | | | | | | 8244 | 4h | 15m / wk - Lecture & 4h 15m / wk - Lab (06/23-07/30) | Trapl C Trapl C | ONLINE | 2.0 | | | | | | |
| 8227 | 12h | 10m / wk (06/08-07/22) | Nguyen T | ONLINE | 5.0 | NURS 150 NURSING PROGRAM READINESS | | | | | | | | | | | |
| 8228 | 12h | 10m / wk (06/08-07/24) | Bishop E | ONLINE | 5.0 | 0189 | 5h 35m / wk - Lecture & 8h 25m / wk - Lab (06/22-07/10) | Hanna Hanna | ONLINE | 1.5 | | | | | | | |
| MATH 440 SUPERVISED TUTORING: MATHEMATICS | | | | | | NURS 264 BASIC ARRHYTHMIA AND CORONARY CARE | | | | | | | | | | | |
| 8231 | 16h | 0m / wk (06/08-07/24) | Lake E | ONLINE | 0.0 | 8250 | 8h | 25m / wk (07/06-07/13) | Trapl C | ONLINE | 1.0 | | | | | | |
| 8232 | 16h | 0m / wk (06/08-07/24) | Lake E | ONLINE | 0.0 | Nutrition And Food | | | | | | | | | | | |
| Medical Assisting | | | | | | NUTF 1 NUTRITION | | | | | | | | | | | |
| MEDA 100 INTRODUCTION TO HEALTH CAREERS | | | | | | 0072 | 6h | 20m / wk (06/08-07/31) | Lord V | ONLINE | 3.0 | | | | | | |
| 0162 | 2h | 45m / wk (6/08-07/17) | Bell M | ONLINE | 1.0 | 0133 | 6h | 20m / wk (06/08-07/31) | Lord V | ONLINE | 3.0 | | | | | | |
| MEDA 105 MEDICAL TERMINOLOGY | | | | | | Older Adult Program | | | | | | | | | | | |
| 8233 | 8h | 25m / wk (6/08-07/31) | Bell M | ONLINE | 4.0 | ART 431 DRAWING AND COMPOSITION | | | | | | | | | | | |
| MEDA 123 MEDICAL ASSISTING CERTIFICATION REVIEW | | | | | | 8324 | 6h | 20m / wk (06/08-07/29) | Bispo | ONLINE | 0.0 | | | | | | |
| 0071 | 4h | 15m / wk (06/08-07/31) | Bell M | ONLINE | 2.0 | 8325 | 6h | 20m / wk (06/09-07/30) | Bispo | ONLINE | 0.0 | | | | | | |
| MEDA 130 MEDICAL ASSISTING EXTERNSHIP | | | | | | ORNH 425 SUCCESSFUL GARDENING TECHNIQUES | | | | | | | | | | | |
| 8236 | 22h | 25m / wk (6/08-07/31) | Bell M | CLINIC | 3.0 | 8329 | 5h | 35m / wk (06/08-07/15) | Staff | ONLINE | 0.0 | | | | | | |
| Music | | | | | | Personal Development | | | | | | | | | | | |
| MUSI 1 MUSIC APPRECIATION | | | | | | PERS 10 INTRODUCTION TO COLLEGE SUCCESS | | | | | | | | | | | |
| 8239 | 6h | 20m / wk (06/08-07/31) | Durst A | ONLINE | 3.0 | 0174 | 8h | 25m / wk (06/08-06/19) | De Soto A | ONLINE | 1.0 | | | | | | |
| MUSI 50A BEGINNING PIANO I | | | | | | Philosophy | | | | | | | | | | | |
| 8241 | 5h | 35m / wk (06/08-07/17) | Durst A | ONLINE | 1.0 | PHIL 2 INTRODUCTION TO PHILOSOPHY | | | | | | | | | | | |
| MUSI 50B BEGINNING PIANO II | | | | | | 8523 | 6h | 20m / wk (06/08-07/31) | Provost | ONLINE | 3.0 | | | | | | |
| 0046 | 5h | 35m / wk (06/08-07/17) | Durst A | ONLINE | 1.0 | PHIL 4 MORAL ISSUES | | | | | | | | | | | |
| | | | | | | 0056 | 6h | 20m / wk (06/08-07/31) | Provost | ONLINE | 3.0 | | | | | | |
| | | | | | | PHIL 10 INTRODUCTION TO CRITICAL THINKING | | | | | | | | | | | |
| | | | | | | 8389 | 6h | 20m / wk (06/08-07/31) | Provost | ONLINE | 3.0 | | | | | | |

| SECTION | DAYS | TIME | INSTRUCTOR | ROOM | UNITS | SECTION | DAYS | TIME | INSTRUCTOR | ROOM | UNITS | SECTION | DAYS | TIME | INSTRUCTOR | ROOM | UNITS |
|--|------|------------------------------|------------|--------|-------|---|------|------------------------------|------------|--------|-------|--|------|------|------------|------|-------|
| Physical Education | | | | | | Physical Fitness | | | | | | <p>Stay healthy online this summer with MPC!</p> <p>Join our online yoga and beginning weight training programs. These fitness classes begin on June 8th and run for the full 8-week summer session.</p> <p>In addition to our online offerings, we hope to add face-to-face physical education and fitness classes if MPC is able to open up to students during the summer, so keep monitoring WebReg for schedule adjustments as the current situation changes.</p> <p>Our faculty are standing by to bring you a “summer fit” experience.</p> | | | | | |
| PHED 18 FUNDAMENTALS OF FOOTBALL | | | | | | PFIT 10A BEGINNING WEIGHT TRAINING | | | | | | | | | | | |
| 0275 | | 8h 25m / wk (07/06-07/29) | Palmer R | ONLINE | 0.5 | 8263 | | 3h 10m / wk (06/08-07/31) | Staff | ONLINE | 0.5 | | | | | | |
| 8392 | | 6h 40m / wk (06/29-07/30) | Palmer R | ONLINE | 0.5 | PFIT 17A YOGA I | | | | | | | | | | | |
| 8393 | | 6h 40m / wk (06/29-07/30) | Palmer R | ONLINE | 0.5 | 8269 | | 4h 15m / wk (06/09-07/30) | Benavente | ONLINE | 0.5 | | | | | | |
| PHED 29 VARSITY ATHLETIC CONDITIONING | | | | | | PFIT 1BA YOGA II | | | | | | | | | | | |
| 0010 | | 5h 35m / wk (06/16-07/23) | Bates | ONLINE | 0.5 | 0186 | | 4h 15m / wk (06/09-07/30) | Benavente | ONLINE | 0.5 | | | | | | |
| 0011 | | 5h 35m / wk (06/15-07/20) | Spiering | ONLINE | 0.5 | PFIT 17C YOGA III | | | | | | | | | | | |
| 0027 | | 5h 35m / wk (06/15-07/23) | Carroll M | ONLINE | 0.5 | 0048 | | 4h 15m / wk (06/09-07/30) | Benavente | ONLINE | 0.5 | | | | | | |
| 0214 | | 5h 35m / wk (06/15-07/23) | Phillips D | ONLINE | 0.5 | | | | | | | | | | | | |
| 0027 | | 4h 45m / wk (06/15-07/27) | Moore K | ONLINE | 0.5 | | | | | | | | | | | | |

HEALTHY BODY HEALTHY MIND

Stay healthy and fit this summer!

**Fitness, Varsity Athletic Conditioning,
& Weight Training**

- Athletic Conditioning
- Weight Training
- Yoga



| SECTION | DAYS | TIME | INSTRUCTOR | ROOM | UNITS | SECTION | DAYS | TIME | INSTRUCTOR | ROOM | UNITS | SECTION | DAYS | TIME | INSTRUCTOR | ROOM | UNITS |
|---------|------|------|------------|------|-------|---------|------|------|------------|------|-------|---------|------|------|------------|------|-------|
|---------|------|------|------------|------|-------|---------|------|------|------------|------|-------|---------|------|------|------------|------|-------|



EOPS

EXTENDED OPPORTUNITY PROGRAMS & SERVICES

- Book Vouchers
- Grants
- Calculators & Computers
- Priority Registration
- Counseling
- Tutoring

For more information or to enroll, call (831) 646-4247 or email eopsemail@mpc.edu

| Political Science | | | | | PSYC 25 LIFESPAN DEVELOPMENT | | | | | Spanish | | | | |
|--|---------------------------|--------------|--------|-----|--|--|--|--|--|--|--|--|--|--|
| POLS 1 INTRODUCTION TO AMERICAN GOVERNMENT AND POLITICS | | | | | 0084 6h 20m / wk (06/08-07/31) Nicolaides C ONLINE 3.0 | | | | | SPAN 1A ELEMENTARY SPANISH I | | | | |
| 0068 | 8h 25m / wk (06/08-07/16) | Blanchard L | ONLINE | 3.0 | 0222 6h 20m / wk (06/08-07/31) Nicolaides C ONLINE 3.0 | | | | | 0062 MTWThF 9:30am-10:30am Borja F ONLINE 5.0 & 7h 10m / wk Borja F ONLINE (06/08-07/24) - Synchronous & Asynchronous Learning | | | | |
| 0223 | 6h 20m / wk (06/08-07/31) | Blanchard L | ONLINE | 3.0 | 0250 8h 25m / wk (06/08-07/17) Whitworth R ONLINE 3.0 | | | | | SPAN 1SA ELEMENTARY SPANISH FOR SPANISH SPEAKERS I | | | | |
| 8279 | 8h 25m / wk (06/08-07/16) | Banks L | ONLINE | 3.0 | 0323 8h 25m / wk (06/08-07/17) Whitworth R ONLINE 3.0 | | | | | 0039 TTh 11:00am-1:00pm Borja F ONLINE 5.0 & 8h 10m / wk Borja F ONLINE (06/08-07/23) - Synchronous & Asynchronous Learning | | | | |
| 8281 | 6h 20m / wk (06/08-07/31) | Van Zwaluwen | ONLINE | 3.0 | Real Estate | | | | | Speech Communication | | | | |
| 8282 | 6h 20m / wk (06/08-07/31) | Blanchard L | ONLINE | 3.0 | REAL 56 REAL ESTATE PROPERTY MANAGEMENT | | | | | SPCH 1 PUBLIC SPEAKING | | | | |
| POLS 10 GENDER IN AMERICAN POLITICS | | | | | 8408 6h 20m / wk (06/08-07/31) Banks ONLINE 3.0 | | | | | 0007 8h 25m / wk (06/08-07/17) Fox ONLINE 3.0 | | | | |
| 0051 | 6h 20m / wk (06/08-07-17) | David D | ONLINE | 3.0 | Sociology | | | | | 0245 8h 25m / wk (06/08-07/17) Sturt ONLINE 3.0 | | | | |
| Psychology | | | | | SOCI 1 INTRODUCTION TO SOCIOLOGY | | | | | 8300 8h 25m / wk (06/08-07/17) Grenauer R ONLINE 3.0 | | | | |
| PSYC 1 GENERAL PSYCHOLOGY | | | | | 0118 8h 25m / wk (06/08-07/17) White M ONLINE 3.0 | | | | | SPCH 2 SMALL GROUP COMMUNICATION | | | | |
| 0190 | 8h 25m / wk (06/08-07/17) | Kotecki A | ONLINE | 3.0 | 8294 6h20m / wk (06/08-07/17) Chap M ONLINE 3.0 | | | | | 0038 8h 25m / wk (06/08-07/17) Sturt ONLINE 3.0 | | | | |
| 0221 | 6h 20m / wk (06/08-07/31) | Austin T | ONLINE | 3.0 | SOCI 40 CONTEMPORARY SOCIAL PROBLEMS | | | | | Theatre Arts | | | | |
| 8285 | 6h 20m / wk (06/08-07/31) | Lachman L | ONLINE | 3.0 | 8297 8h 25m / wk (06/08-07/16) Zaleha B ONLINE 3.0 | | | | | THEA 5 FILM APPRECIATION | | | | |
| 8286 | 8h 25m / wk (06/08-07/17) | Kotecki A | ONLINE | 3.0 | | | | | | 0115 6h 20m / wk (06/08-07/31) Eck T ONLINE 3.0 | | | | |
| | | | | | | | | | | 0116 6h 20m / wk (06/08-07/31) Eck T ONLINE 3.0 | | | | |

| MARINA / SEASIDE CAMPUS LOCATIONS | MA MPC Education Center at Marina 289 12th Street, Marina | SPS MPC Public Safety Training Center 2642 Colonel Durham Street, Seaside |
|---|---|--|
| OFF – CAMPUS LOCATIONS | | |
| AP Ariel Theatrical 320 Main Street, Salinas | HOPE Hope Building 1663 Catalina St., Sand City | NBI North Bay Industries 1 University Circle, Monterey |
| BHB Bayonet and Black Horse Golf Course 1 McClure Way, Seaside | HVMS Hidden Valley Music Seminars 88 West Carmel Valley Road, Carmel Valley | OC Oldemeyer Center 986 Hilby Ave., Seaside |
| BPH Bay Park Hotel 1425 Munras Ave., Monterey | MCFB Mid Coast Fire Brigade 38841 Palo Colorado Rd., Carmel | PGHS Pacific Grove High School 615 Sunset Dr., Pacific Grove |
| BSFB Big Sur Volunteer Fire Brigade Pfeiffer Ridge Rd., Big Sur | MCRFPD Monterey County Regional Fire Protection District 19900 Portola Dr., Salinas | PRT Pacific Repertory Theater Monte Verde & 8th, Carmel |
| CCLK Central Coast Lighthouse Keepers Pt. Sur State Park, Big Sur | MFD Monterey Fire Department Pacific & Madison, Monterey | SALLYG Sally Griffin Active Living Center 700 Jewell Ave., Pacific Grove |
| CFPD Cachagua Fire Protection District 37200 Nason Rd., Carmel Valley | MHS Monterey High School 101 Herrmann Dr., Monterey | SFD Seaside Fire Department 1635 Broadway Ave., Seaside |
| CHS Carmel High School 3600 Ocean Ave., Carmel | MRNHS Marina High School 2995 Rendova Rd., Marina | SHS Seaside High School 2200 Noche Buena, Seaside |
| CLINIC Health Facility Clinic See Program Coordinator | MTC Mott Training Center 837 Asilomar Blvd, Pacific Grove | SNJOSE South Bay Regional Public Safety Training Consortium 3095 Yerba Buena Rd., San Jose |
| HFD Hanford Fire Department 350 West Grangeville Blvd., Hanford | MTCA Mott Training Center Annex 2211 Garden Rd., Shop C, Monterey | |

Directory of Student Services

Academic Council Petitions
(831) 645-1377

Access Resource Center
(831) 646-4070

Admissions & Records
(831) 646-4002 / admissions@mpc.edu

Articulation
(831) 646-3013

Assessment Office
(831) 646-4027 / assessment@mpc.edu

Associated Students of MPC Office
(831) 646-4013

Bookstore
(831) 657-4680

CARE / CalWorks
(831) 646-4248

Career / Transfer Resource Center
(831) 645-1336

Certificate Requirements
(831) 646-4020

Clubs, Student
(831) 646-4192

Counseling Office
(831) 646-4020

Dean, Student Services
(831) 645-1377

Dean, Student Services
(831) 646-4155

Dean, Student Services
(831) 646-4220

Dual Enrollment
(831) 646-4282 / dualenrollment@mpc.edu

Early Childhood Education Lab School
(831) 646-4066

Education Center at Marina
(831) 646-4850 / marinaedcenter@mpc.edu

EOPS Office
(831) 646-4247

Financial Aid (Student Financial Services)
(831) 646-4030

Graduation Requirements
(831) 646-4020

Health Services
(831) 646-4017

Sandy Nee
Student Services Building

Jacque Evans
Student Services Building

Student Services Building

He Seon Ihn
Student Services Building

Student Services Building

Julie Osborne
Student Center

Bookstore Manager
Student Center

Kacey Giammanco
Student Services Building

Sudeshna Nand
General Classrooms

Counselors
Student Services Building

Julie Osborne
Student Center

Alethea De Soto
Student Services Building

LaKisha Bradley
Student Services Building

Eric Ogata
Student Services Building

Lyndon Schutzler
Athletics / Kinesiology

Jeff Procrive
Early Childhood Education Lab School

Eric Ogata
Student Services Building

Francisco Tostado
Student Services Building

Counselors
Student Services Building

Leann Contapay
Student Services Building

Housing Information
(831) 646-4192

International Students
(831) 645-1380

Math / Science Upward Bound
(831) 645-1306

Parking Permits Purchase
(831) 646-4002

Policies and Regulations, Student
(831) 646-4155

Probation and Disqualification
(831) 645-1377

Registration
(831) 646-4002 / admissions@mpc.edu

Residency
(831) 646-4002 / admissions@mpc.edu

Scholarships
(831) 646-4030

Security
(831) 646-4099 / (831) 646-4292

Sexual Harrassment / Sexual Misconduct
(831) 646-4850 / titleIX@mpc.edu

Student Accounts
(831) 646-4046

Student Activities
(831) 646-4192

Student Center
(831) 646-4192

Student Conduct
(831) 646-4155

Student Employment
(831) 646-4195

Student Equity & Achievements
(831) 646-4261 / seaprogram@mpc.edu

Title IX
(831) 646-4850 / titleIX@mpc.edu

TRIO Student Support Services (SSS)
(831) 646-4246

Transcripts
(831) 646-4002 / admissions@mpc.edu

Upward Bound
(831) 646-4089

Veterans Assistance Office
(831) 646-4025 / (831) 646-4020

Julie Osborne
Student Center

Alethea DeSoto
Student Services Center

Jasmine Do
Student Services Building

Online via WebReg

VP of Student Services
Administration Building

Sandy Nee
Student Services Building

Admissions & Records
Student Services Building

Admissions & Records
Student Services Building

Student Financial Services
Student Services Building

Student Center

Kayla Garcia
Human Resources

Fiscal Services
Administration Building

Julie Osborne
Student Center

Julie Osborne
Student Center

VP of Student Services
Administration Building

Lien Nguyen
General Classrooms

LaKisha Bradley
Student Services Building

Kayla Garcia
Human Resources

Grace Anongchanya
Student Services Building

Admissions & Records
Student Services Building

Sandra Washington
Student Services Building

Eileen Crutchfield
Student Center

MPC FOUNDATION MONTEREY PENINSULA COLLEGE

Thank you Business Partners for supporting MPC students!



1st Capital Bank
Monterey Private Wealth

Hayashi Wyland
Vanderbilt CPAs PC

Dole Fresh Vegetables
Mahoney & Associates

Kennedy, Archer & Giffen
McGilloway, Ray, Brown & Kaufman
Monterey Trust Management

Lozano Smith, LLP
Monterey Plaza Hotel



Residential Customer

ADM ADMINISTRATION

- Fiscal Services
- Human Resources
- Information Center
- Information Technology
- Marketing & Communications
- Mail Room
- MPC Foundation
- President's Office
- V.P., Academic Affairs
- V.P., Administrative Services
- V.P., Student Services

AC ART CERAMICS

AD ART DIMENSIONAL

- Jewelry & Metal Arts
- Sculpture

AG ART GALLERY

AMP AMPHITHEATER

AS ART STUDIO

- Creative Arts Division Office
- Student Art Center

AT AUTOMOTIVE TECHNOLOGY

BMC BUSINESS MATH & COMPUTING

- Business & Computer Science Division Office
- Business Skills Center Office
- Cooperative Work Experience Office
- Internship Program Office
- Math Learning Ctr.

DA DANCE & ADAPTIVE PE

- Adaptive Physical Education

ECE EARLY CHILDHOOD EDUCATION

- Early Childhood Laboratory School

FA FACILITIES

- Custodial Services
- Grounds
- Maintenance
- Shipping / Receiving

FC FAMILY & CONSUMER SCIENCE

- FC Kitchen

FTC FITNESS / TRAINING CENTER

GA GRAPHIC ARTS

GC GENERAL CLASSROOMS

- Career Transfer Resource Center
- El Centro
- Job Center

GYM GYMNASIUM / KINESIOLOGY

- Athletic Training
- Equipment Room
- Gymnasium
- Locker Rooms
- Kinesiology Division Office

HU HUMANITIES

HSS HUMANITIES / SUPPORT SERVICES

- Access Resource Center (ARC)
- High Tech Center
- Humanities Division Office

IC INTERNATIONAL CENTER

LF LECTURE FORUM

- Marine Advanced Technology Education (MATE) Center
- Print Shop

LTC LIBRARY & TECHNOLOGY CENTER

- English & Study Skills Center
- English as a Second Language (ESL) Lab
- Instructional Technology Dept.
- Leon Stutzman Room
- Online Education
- Reading Center
- Sam Karas Room
- STEM CEL Tutoring



| | | | | | | |
|-------------------------|--|----------------------------|---|------------------------------------|------------------------------------|------------------------------------|
| P Public Parking | All vehicles must have a parking pass. Buy one at Fiscal Services in: ADM | I Information | S Security Office 646-4099 | R Restrooms | L Lactation Room | B MST Bus Stop |
| P Staff Parking | | + First Aid / Nurse | + Automated External Defibrillator (AED) | R Gender-Inclusive Restroom | EE Accessibility / Elevator | Wi-Fi Campus has Free Wi-Fi |

LS LIFE SCIENCES

- Life Science Division Office

MU MUSIC

- Listening Center
- Music Hall

MV MODULAR VILLAGE

- T300
- T500
- T600

NU NURSING

- Nursing Division Office

PS PHYSICAL SCIENCE

- Physical Science Division Office

SS SOCIAL SCIENCE

- Social Science Division Office
- Shark Shack

SC STUDENT CENTER

- Almaden Room
- Associated Students of MPC (ASMPC)
- Bookstore
- Cafeteria
- Costanoan Room
- Housing Information
- Student Activities Office
- TRIO Learning Center
- Veteran's Resource Center
- **Security: 646-4099**

STS STUDENT SERVICES

- Access Resource Center
- Admissions & Records
- Assessment Center
- CalWorks
- Cooperative Agencies Resources for Education (CARE)
- Counseling
- Dean of Student Services

STS STUDENT SERVICES CONTINUED

- Extended Opportunity Programs & Services (EOPS)
- **First Aid & Emergency Care**
- International Student Programs
- Residency Info
- Student Financial Services
- Student Health & Psychological Services
- Testing Center (ARC)
- TRIO Offices
- Student Equity & Achievement

T100 TEMPORARY BUILDING

- Planning, Research & Institutional Effectiveness (PRIE)

TH THEATER