

MPC New Faculty  
Nexus Meeting: October 21, 2016

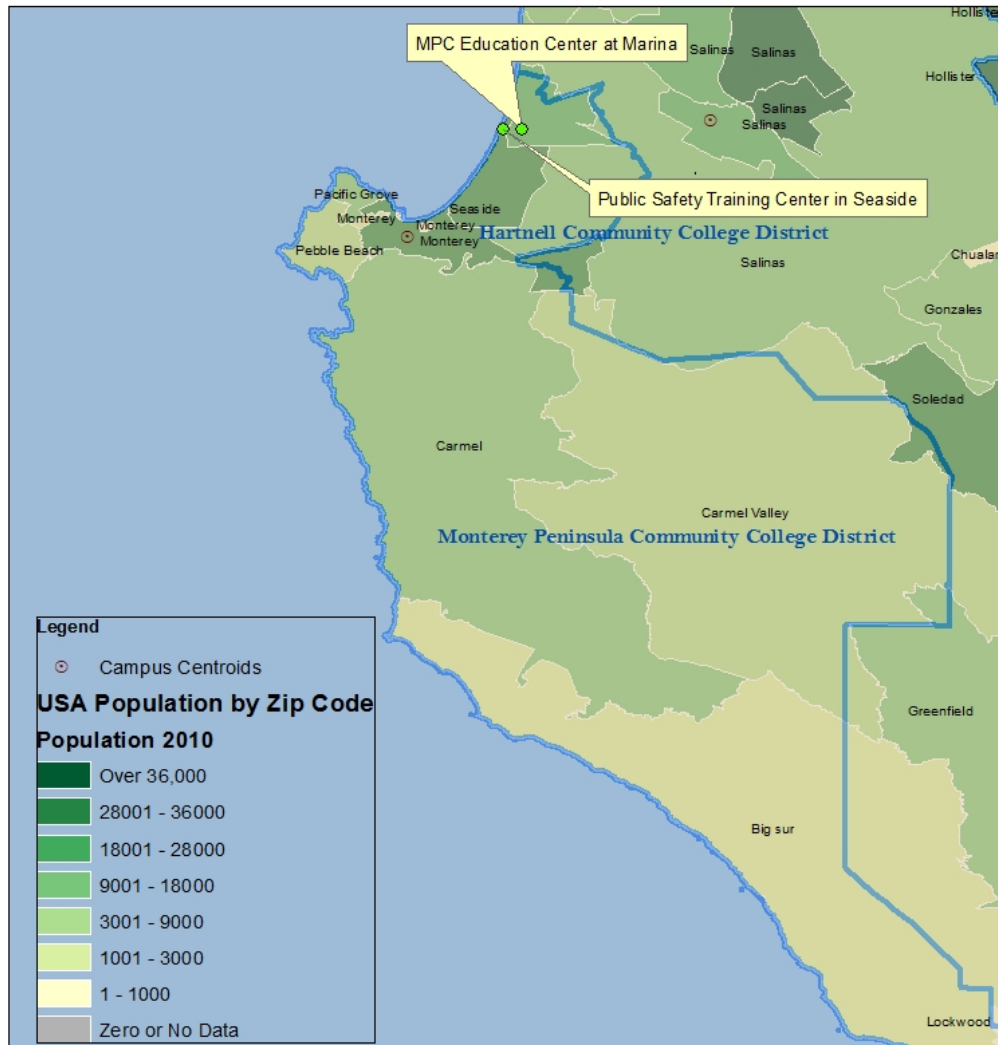
Who Are Our Students?





## What Does Our Community Look Like?

# Monterey Peninsula Community College District



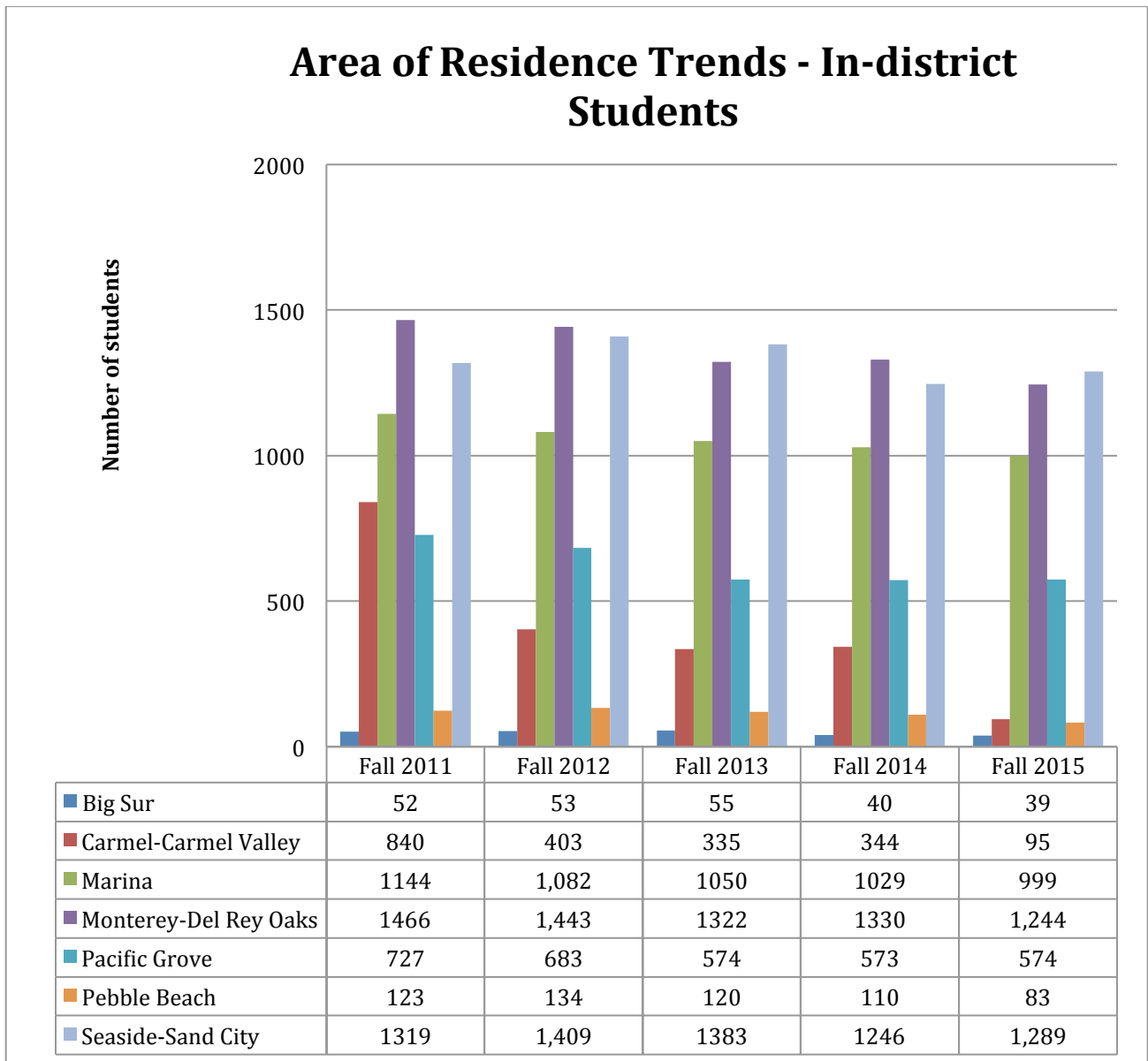
Sources:  
Insert Agency #1 or Author#1, Data Title #1, Date #1, URL #1.  
Insert Agency #2 or Author#2, Data Title #2, Date #2, URL #2.  
College data from CCC GIS Collaborative, CCC\_GIS\_Basemap\_20090501,  
www.cccgis.org

Draft: (insert date)  
Direct questions to (insert email)  
or visit www.cccgis.org

- **For more information:** <https://foundationccc.org/what-we-do/system-support-and-services/community-colleges-gis>

## MPC Students: Area of Residence

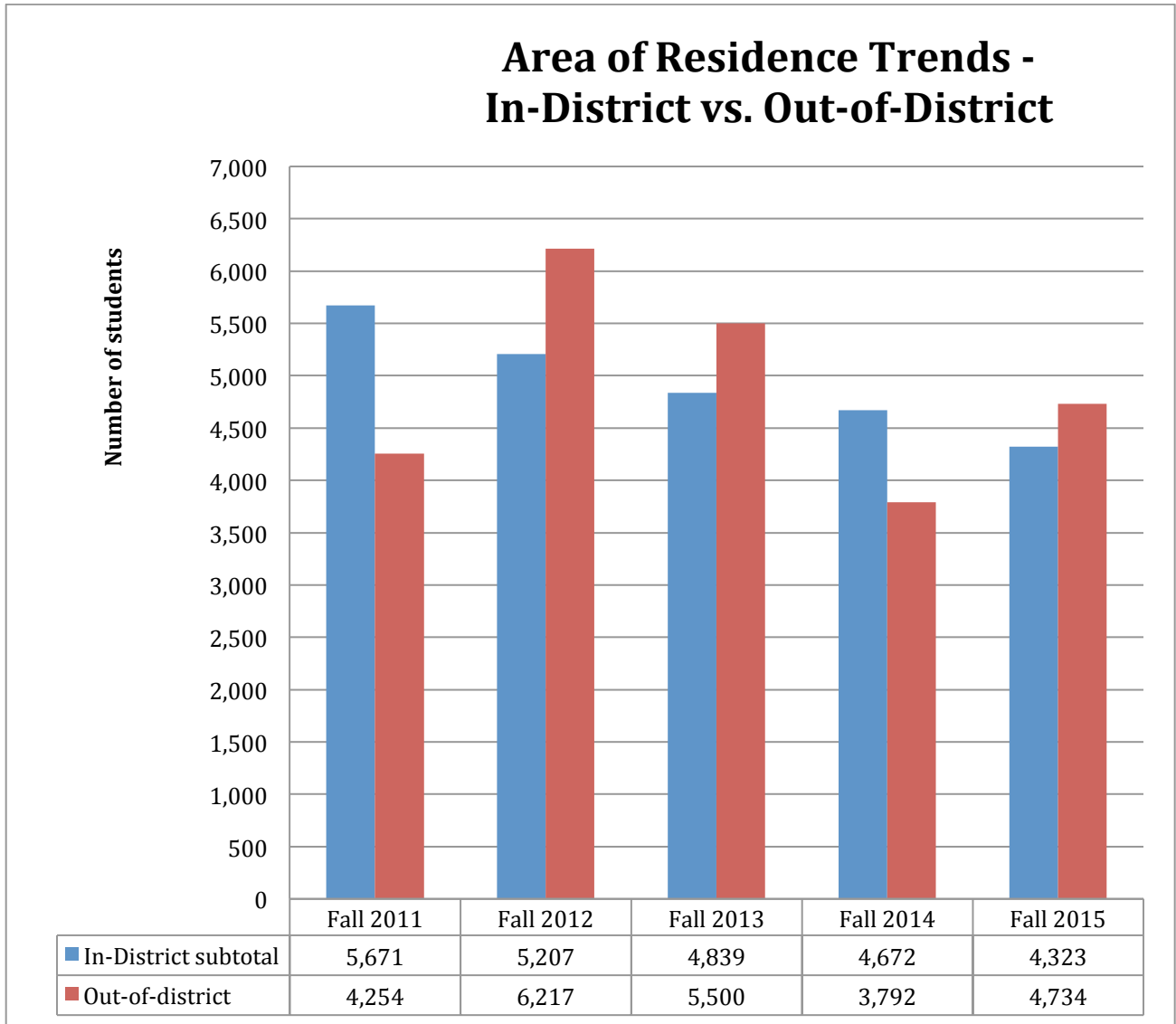
The graph below shows students' area of residence for in-district students only for five years. The number of students from each area within the district is proportionate with the total adult population in those areas.



Source: California Community Colleges Chancellor's Office (CCCCO) MIS Referential Data Files

## MPC Students: Area of Residence

The graph compares in-district versus out-of-district residence for five years. MPC has a large number of out-of-district students, due in part, to public safety contract courses with agencies outside MPC's service area.



Source: California Community Colleges Chancellor's Office (CCCCO) MIS Referential Data Files

## The Community: Ethnicity

The table below shows the race and ethnicity profile for the incorporated cities and Census Designated Places (CDP) in Monterey Peninsula College’s service area. The table does not include the unincorporated areas of the college district. The cities of Marina, Seaside, and Sand City, all located in the northern portion of the district, are more racially and ethnically diverse than the cities and CDPs in the southern portion of the district.

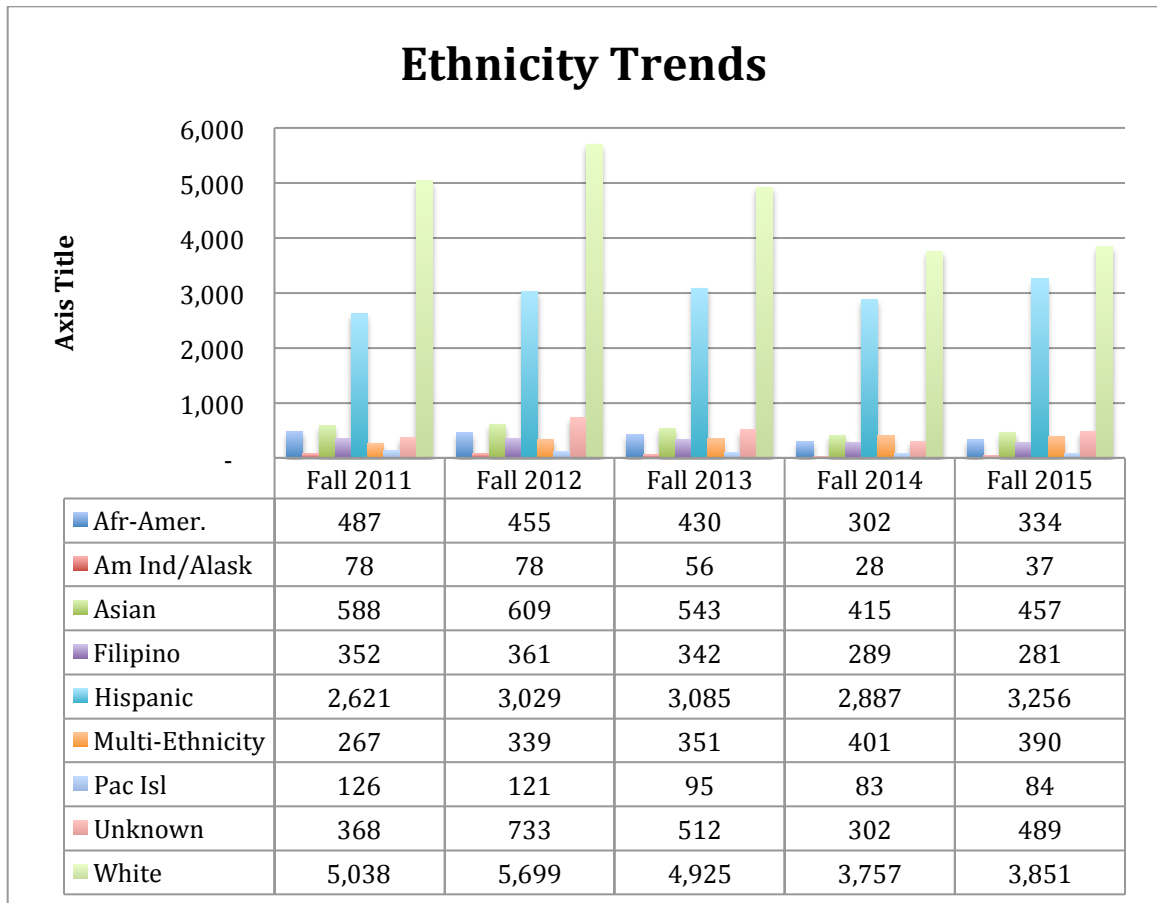
	Not Hispanic or Latino							Hispanic or Latino (of any race)
	White	African Amer	Am Indian/ Alaska Native	Asian	Hawaiian / Pacific Islanders	Other Race	Two or more races	
Carmel-By-The-Sea	80.7%	0.0%	0.2%	8.2%	0.0%	0.0%	1.3%	9.5%
Carmel Valley Village CDP	86.7%	0.9%	0.0%	2.2%	0.0%	0.0%	4.9%	5.3%
Del Monte Forest CDP	76.1%	2.6%	0.4%	7.1%	0.1%	0.0%	3.3%	10.4%
Del Rey Oaks	72.3%	0.2%	0.0%	8.3%	0.2%	0.0%	4.4%	14.6%
Marina	37.6%	6.3%	0.3%	15.5%	4.9%	0.1%	6.2%	29.0%
Monterey	68.1%	2.6%	0.1%	8.1%	0.1%	0.2%	3.7%	17.0%
Pacific Grove	76.8%	1.8%	0.3%	5.5%	0.0%	0.0%	3.2%	12.4%
Sand City	56.1%	2.3%	0.3%	0.6%	0.0%	0.0%	2.8%	38.0%
Seaside	31.2%	8.1%	0.6%	10.0%	1.6%	0.5%	4.9%	43.0%

*Data source: U.S. Census Bureau, 2010-2014 American Community Survey 5-Year Estimates, Table DP05*

➤ **For more information:** <https://www.census.gov/data/data-tools.html>

## MPC Students: Ethnicity

White students comprise the largest ethnicity group at MPC. Hispanic/Latino students are the largest non-white group. The ethnicity profile for the overall student population reflects the overall ethnicity profile of Monterey Peninsula College's service area.



Source: California Community Colleges Chancellor's Office (CCCCO) Data Mart

<http://datamart.cccco.edu/Students/Default.aspx>

➤ For more information: <http://datamart.cccco.edu/Students/Default.aspx>

## The Community: Educational Attainment

The table below shows the highest level of educational attainment for adults, age 25 and older, in the cities and Census Designated Places (CDP) in Monterey Peninsula College’s service area. The cities in the northern part of the district—Marina, Seaside, and Sand City—have considerably higher percentages of adults without a high school diploma than do the cities and CDPs in the southern part of the district. By contrast, Marina, Seaside, and Sand City have considerably lower percentages of adults who already have a bachelor’s degree or higher than the areas in the south.

	Not a HS grad		HS grad or GED		Some college		Associate degree		Bachelor’s degree or higher	
Carmel-By-The-Sea	128	4.3%	428	14.4%	547	18.4%	156	5.3%	1,709	57.6%
Carmel Valley Village CDP	107	3.3%	0	0.0%	803	25%	368	11.5%	1,518	47.2%
Del Monte Forest CDP	46	1.2%	0	0.0%	896	23.7%	236	6.3%	2,355	62.3%
Del Rey Oaks	72	5.4%	0	0.0%	323	24.4%	165	12.4%	602	45.4%
Marina	2,293	17.5%	0	0.0%	3,260	24.8%	1,328	10.1%	3,198	24.4%
Monterey	1,174	5.7%	0	0.0%	4,278	20.9%	2,186	10.7%	9,600	46.9%
Pacific Grove	554	4.6%	0	0.0%	2,476	20.7%	960	8.0%	5,993	50.0%
Sand City	44	18.9%	0	0.0%	59	25.3%	18	7.7%	45	19.3%
Seaside	5,639	27.4%	0	0.0%	4,322	21.0%	1,693	8.2%	4,698	22.9%

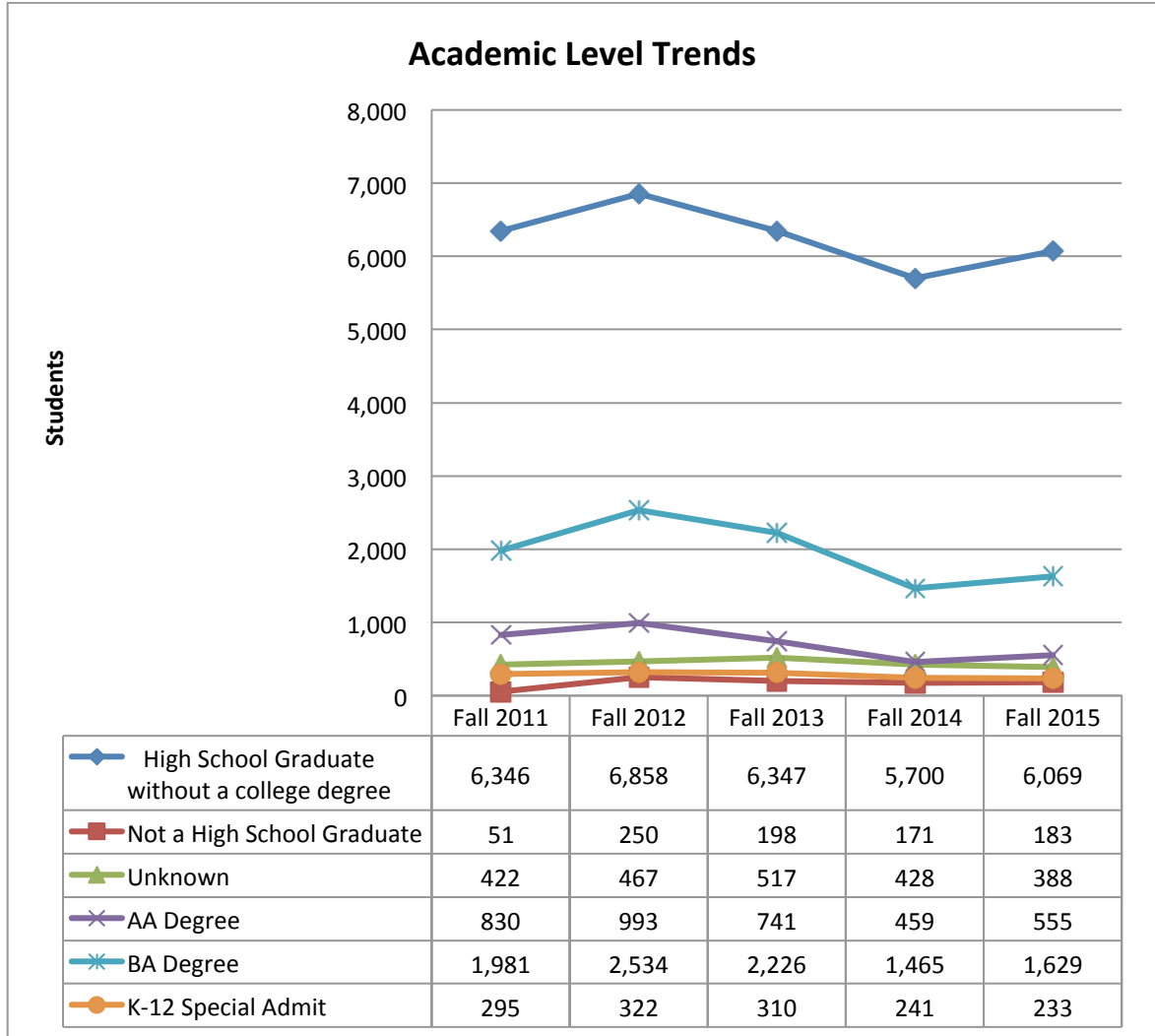
*Data source: U.S. Census Bureau, 2010-2014 American Community Survey 5-Year Estimates, Table B15003*

➤ **For more information:** <https://www.census.gov/data/data-tools.html>



## MPC Students: Educational Attainment

The graph below reflects the highest level of educational attainment of Monterey Peninsula College students. Students at the college freshman level are the largest group; by contrast, there are far fewer students at the sophomore level. In addition, there are a substantial number of students who already have a baccalaureate degree or higher.

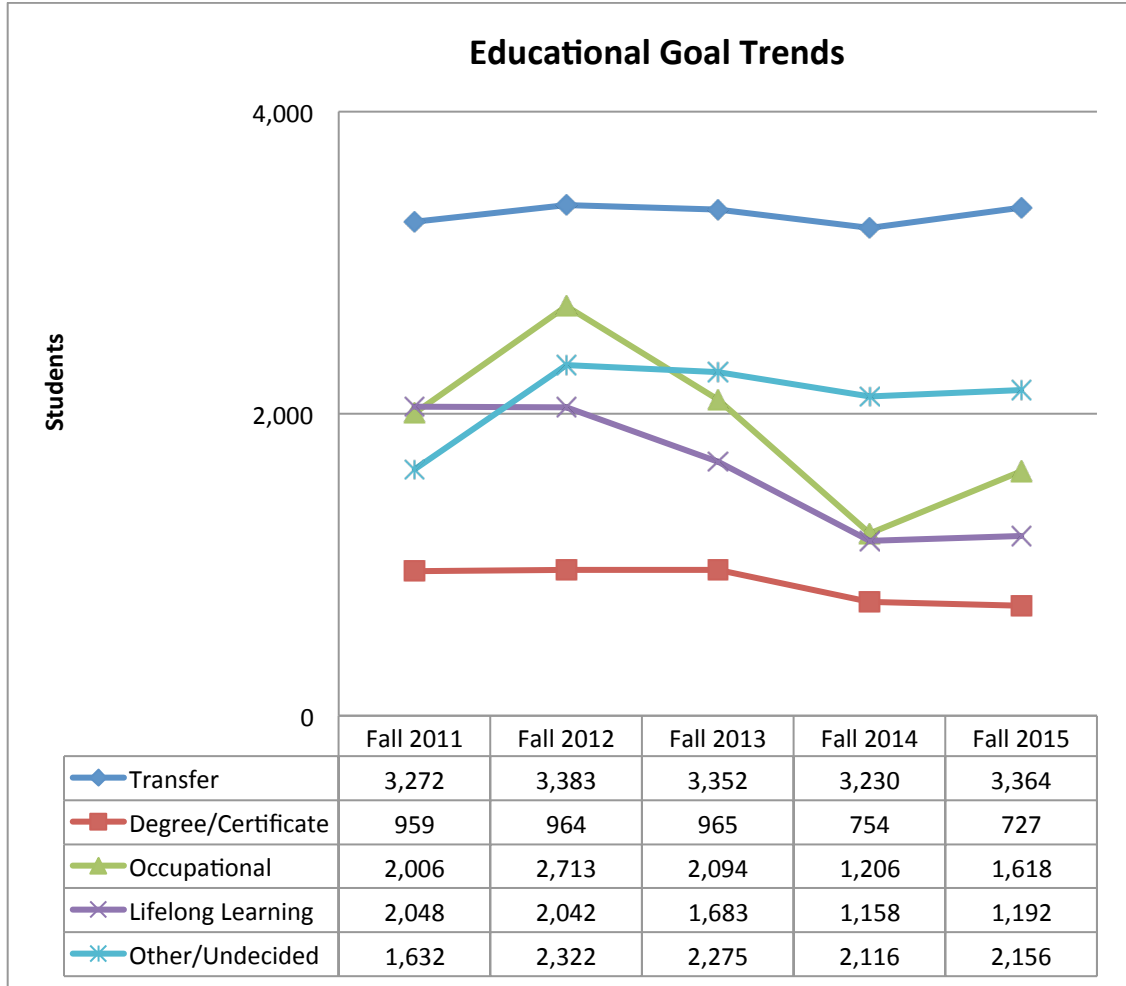


Source: California Community Colleges Chancellor's Office (CCCCO) Data Mart  
<http://datamart.cccco.edu/Students/Default.aspx>

➤ For more information: <http://datamart.cccco.edu/Students/Default.aspx>

## MPC Students: Educational Goals

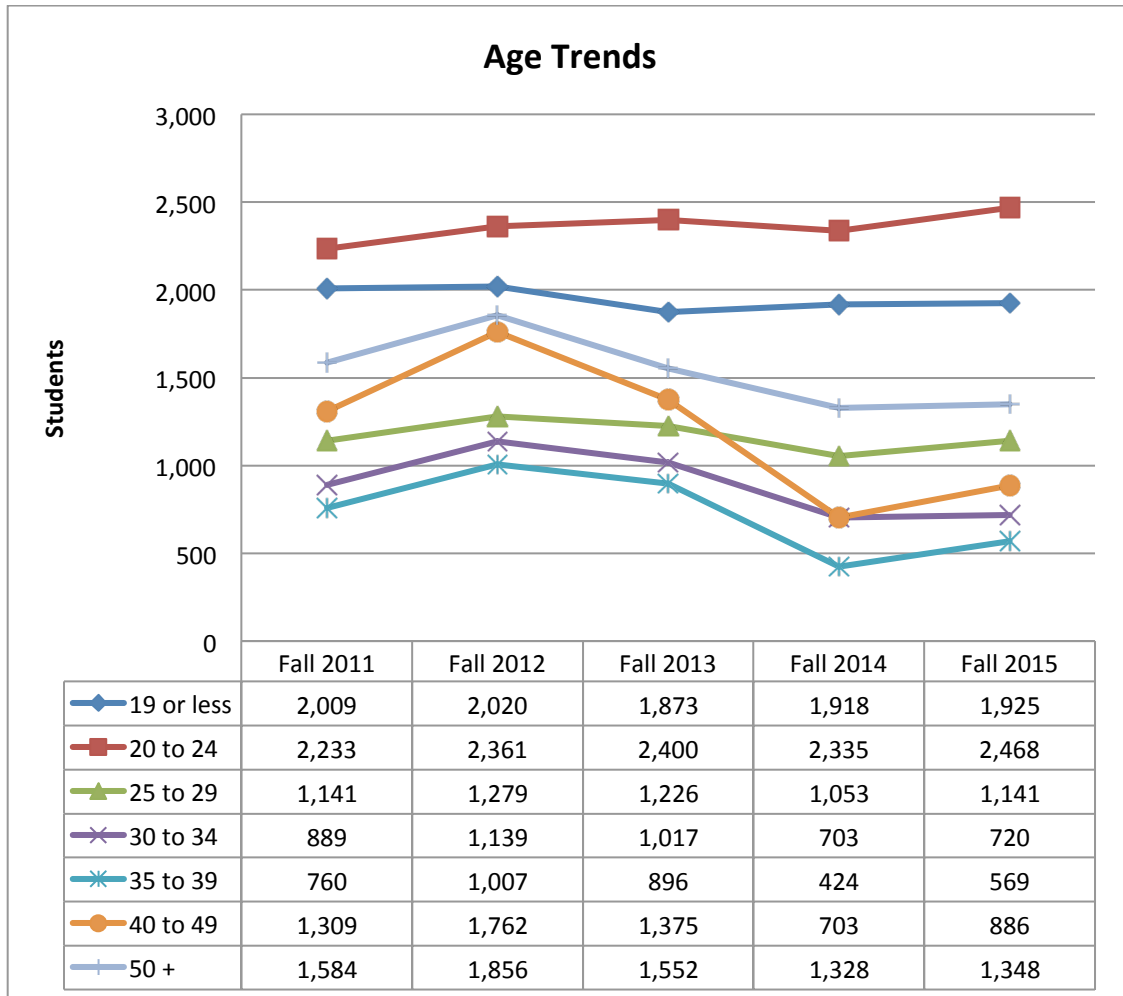
The graph below shows students' self-reported educational goals for five years. Students initially indicate their educational goal when they submit an application for admission. Students' educational goals may change later, but the graph below reflects initial educational goal. Students who indicated that they are seeking both transfer as well as a degree are included in the "Transfer" category only.



Source: California Community Colleges Chancellor's Office (CCCCO) MIS Referential Data Files

## MPC Students: Age

Monterey Peninsula College has a bimodal student population. There are relatively large numbers of younger, “traditional age” college students (under age 25) as there are “older” students.



Source: California Community Colleges Chancellor's Office (CCCCO) Data Mart  
<http://datamart.cccco.edu/Students/Default.aspx>

➤ For more information: <http://datamart.cccco.edu/Students/Default.aspx>



## Course Retention Rates

The retention rate is calculated by dividing the number of students who remained in the course after the drop date by the number of students enrolled at census.

Course Retention by Population Group

	Fall 2011	Fall 2012	Fall 2013	Fall 2014	Fall 2015
<b>Course Retention</b>	<b>84.70%</b>	<b>85.23%</b>	<b>85.56%</b>	<b>83.69%</b>	<b>83.23%</b>
<b>Gender</b>					
Female	83.47%	84.88%	85.75%	83.99%	83.28%
Male	85.83%	85.51%	85.35%	83.29%	83.48%
<b>Ethnicity</b>					
American Indian/ Alaskan Native	85.13%	77.44%	85.37%	82.89%	79.75%
Asian	85.93%	86.59%	87.22%	86.92%	86.31%
Black or African American	84.87%	82.55%	83.87%	80.82%	79.94%
Hispanic or Latino	82.39%	82.91%	82.88%	80.97%	80.52%
Pacific Islander	84.71%	80.86%	91.16%	82.89%	76.68%
White	85.57%	86.99%	87.32%	85.95%	86.20%
Two or more races	82.36%	81.97%	84.66%	83.46%	82.17%
Unknown	96.30%	90.89%	90.20%	88.48%	90.69%
<b>Special Population Groups</b>					
DSPS	84.54%	85.85%	85.24%	85.75%	85.38%
EOPS	83.73%	82.95%	83.56%	84.41%	82.98%
First Generation	Data not available	Data not available	Data not available	79.82%	81.46%

Course Retention by Course Type

	Fall 2011	Fall 2012	Fall 2013	Fall 2014	Fall 2015
<b>Course Retention</b>	<b>84.70%</b>	<b>85.23%</b>	<b>85.56%</b>	<b>83.69%</b>	<b>83.23%</b>
<b>Course Type</b>					
Basic Skills	87.94%	86.22%	80.68%	85.20%	82.01%
Transfer	83.03%	83.52%	84.35%	83.31%	82.32%
Vocational	89.80%	90.55%	91.05%	87.16%	88.73%

Course Retention by Course Modality

	Fall 2011	Fall 2012	Fall 2013	Fall 2014	Fall 2015
<b>Course Retention</b>	<b>84.70%</b>	<b>85.23%</b>	<b>85.56%</b>	<b>83.69%</b>	<b>83.23%</b>
<b>Course Modality</b>					
Distance Education	75.38%	80.45%	78.23%	74.96%	<b>76.05%</b>
Face-to-Face	85.35%	85.60%	86.37%	84.91%	84.42%

Source for all tables on this page: California Community Colleges Chancellor's Office (CCCCO) Data Mart, Retention/Success Rate  
[http://datamart.cccco.edu/Outcomes/Course\\_Ret\\_Success.aspx](http://datamart.cccco.edu/Outcomes/Course_Ret_Success.aspx)

## Course Retention by Discipline

The college uses locally-derived data, rather than the Chancellor’s Office Data Mart (used on the previous page), to examine course retention by discipline. The locally-derived data enable the college to use its own department and discipline taxonomy, which make the data more useful and relevant for program review. The overall course retention rates, presented in the first row of the table below, differ slightly from the retention rates presented in the previous tables of this section.

	Fall 2011	Fall 2012	Fall 2013	Fall 2014	Fall 2015
<b>Course Retention</b>	<b>82.48%</b>	<b>85.32%</b>	<b>85.97%</b>	<b>85.38%</b>	<b>84.70%</b>
<b>Discipline</b>					
ADMJ	80.99%	88.10%	86.19%	86.25%	82.49%
ADPE	92.73%	97.36%	96.65%	98.53%	96.87%
ANAT	70.61%	78.75%	81.49%	78.45%	72.87%
ANTH	86.53%	84.13%	87.15%	87.23%	89.88%
ARAB	70.37%	75.00%	75.86%		
ART	88.34%	89.04%	94.51%		
ARTB			76.36%	85.05%	83.33%
ARTC			93.98%	92.09%	89.26%
ARTD			95.71%	95.72%	91.65%
ARTG			90.09%	87.98%	89.52%
ARTH			90.17%	88.11%	96.22%
ARTP			90.23%	90.76%	87.39%
ARTS			85.60%	85.07%	81.23%
ARTV				82.86%	85.61%
ASTR	86.20%	87.68%	94.27%	97.60%	94.75%
AUTO	88.80%	86.46%	92.15%	89.01%	89.84%
BIOL	82.80%	85.67%	87.07%	79.90%	80.37%
BUSC	46.36%	74.72%	78.19%	74.82%	83.76%
BUSI	75.65%	79.29%	80.92%	81.62%	79.27%
CHDV	82.62%	86.39%			
CHEM	81.33%	88.74%	87.70%	86.86%	85.68%
CHIN	89.66%	81.48%	85.00%		
COMM	88.46%	85.29%	100.00%	93.55%	68.38%
COOP	77.65%	84.81%	92.86%	95.45%	92.38%
CSIS	85.79%	79.34%	87.03%	84.55%	84.78%
DANC	86.67%	85.54%	77.33%	86.48%	77.62%
DNTL	84.04%	95.44%	97.28%	99.31%	96.13%
DRAF	69.23%		75.00%	82.79%	88.89%
ECED			83.16%	88.88%	85.26%
ECON	80.32%	85.99%	84.21%	78.40%	85.03%
EDUC			64.71%	55.56%	85.00%
EMMS	67.75%	61.34%	83.88%	91.74%	81.95%

	Fall 2011	Fall 2012	Fall 2013	Fall 2014	Fall 2015
<b>Course Retention</b>	<b>82.48%</b>	<b>85.32%</b>	<b>85.97%</b>	<b>85.38%</b>	<b>84.70%</b>
<b>Discipline</b>					
ENGL	75.93%	78.14%	76.73%	74.84%	76.72%
ENGR	79.39%	93.00%	96.34%	96.34%	86.13%
ENSL	87.25%	92.01%	93.27%	91.66%	85.28%
ETNC	85.52%	80.65%	80.19%	76.52%	86.72%
FACD	100.00%	100.00%	100.00%		
FACS		87.50%			80.00%
FASH	84.85%	87.62%	87.34%	84.20%	76.22%
FIRE	97.18%	99.07%	92.99%	100.00%	
FPTC				86.44%	87.88%
FREN	73.57%	79.52%	74.33%	83.06%	77.82%
GENT	92.28%	98.41%	100.00%	96.97%	85.40%
GEOG	81.07%	72.38%	86.67%	84.38%	64.52%
GEOL	70.26%	87.01%	78.31%	90.76%	72.63%
GERM	93.42%	75.86%	69.27%	90.91%	38.24%
GWOS					77.40%
HIST	84.50%	88.05%	85.53%	81.99%	81.24%
HLTH	95.65%	86.36%	86.67%	76.47%	77.27%
HOSP	75.17%	91.31%	93.48%	90.46%	93.71%
HUMA	83.05%	84.45%	85.57%	76.78%	79.64%
HUMS	89.65%	71.79%	88.52%	80.85%	79.53%
INTD	74.57%	83.59%	75.01%	87.79%	90.92%
ITAL	61.54%	63.87%	72.86%		85.42%
JPNS	81.90%	82.81%	90.24%	84.20%	85.28%
LETP	98.25%	99.04%	99.63%	98.72%	99.02%
LIBR	84.20%	89.58%	83.04%	80.59%	85.57%
LING	81.41%	76.59%	86.61%	82.58%	80.27%
LNSK	83.29%	90.80%	81.77%	88.38%	81.83%
MAST	85.00%	72.00%	71.43%	52.63%	
MATH	79.20%	79.48%	78.80%	77.98%	77.68%
MEDA	87.66%	90.47%	86.22%	91.25%	89.12%
MUSI	88.58%	90.82%	86.74%	93.57%	86.27%
NURS	91.41%	96.86%	96.02%	93.61%	96.46%
NUTF	76.61%	84.65%	75.63%	76.49%	71.09%
OCEN	81.29%	86.64%	87.62%	88.64%	79.00%
ORNH	81.78%	84.13%	73.65%	69.32%	92.83%
PARK		100.00%	96.00%		
PERS	86.77%	88.84%	91.66%	89.94%	89.52%
PFIT	78.04%	78.45%	89.34%	85.41%	84.34%
PHED	89.52%	89.49%	95.80%	92.70%	91.52%
PHIL	75.46%	78.83%	79.94%	72.09%	70.40%
PHOT	85.83%	86.86%	100.00%		

	Fall 2011	Fall 2012	Fall 2013	Fall 2014	Fall 2015
<b>Course Retention</b>	<b>82.48%</b>	<b>85.32%</b>	<b>85.97%</b>	<b>85.38%</b>	<b>84.70%</b>
<b>Discipline</b>					
PHSO	81.00%	76.28%	93.37%	86.61%	88.39%
PHYS	74.20%	86.26%	82.71%	85.11%	81.68%
POLS	83.78%	87.30%	88.46%	83.82%	88.16%
PSYC	80.29%	82.74%	81.06%	80.90%	82.65%
REAL	52.38%	100.00%	91.90%	92.59%	91.41%
SIGN	79.87%	83.07%	68.76%	72.09%	81.12%
SOCI	84.16%	79.58%	80.48%	82.93%	77.93%
SPAN	81.29%	80.70%	79.87%	80.96%	77.80%
SPCH	88.74%	87.94%	88.52%	88.77%	86.19%
THEA	94.16%	96.77%	95.42%	93.85%	93.16%
WOMN	84.31%	87.85%	91.19%	81.24%	100.00%
WRLD		98.00%		85.86%	

*Source: MPC Office of Institutional Research, MIS Referential Files*



## Successful Course Completion Rates

The successful course completion rate is calculated by dividing the number of passing grades (A, B, C, or P) by the number of students enrolled at census.

### Successful Course Completion by Population Group

	Fall 2011	Fall 2012	Fall 2013	Fall 2014	Fall 2015
<b>Successful Course Completion Rate</b>	<b>72.94%</b>	<b>73.02%</b>	<b>73.01%</b>	<b>69.54%</b>	<b>70.32%</b>
<b>Gender</b>					
Female	72.37%	72.51%	73.60%	70.81%	71.29%
Male	73.21%	73.43%	72.29%	68.00%	69.84%
<b>Ethnicity</b>					
American Indian/ Alaskan Native	73.33%	60.37%	65.04%	61.84%	68.35%
Asian	75.92%	76.90%	76.94%	76.24%	76.02%
Black or African American	68.64%	65.63%	65.65%	61.53%	62.20%
Hispanic or Latino	67.63%	67.61%	66.79%	63.70%	64.36%
Pacific Islander	66.06%	60.73%	73.02%	68.86%	59.59%
White	75.93%	77.55%	78.20%	75.06%	77.23%
Two or more races	68.41%	65.35%	71.61%	68.17%	68.97%
Unknown	91.90%	81.29%	79.52%	76.24%	82.92%
<b>Special Population Groups</b>					
DSPS	71.64%	71.96%	71.15%	70.63%	74.37%
EOPS	67.84%	65.44%	70.52%	66.01%	66.97%
First Generation	Data not available	Data not available	Data not available	61.36%	65.01%

### Successful Course Completion by Course Type.

	Fall 2011	Fall 2012	Fall 2013	Fall 2014	Fall 2015
<b>Successful Course Completion Rate</b>	<b>72.94%</b>	<b>73.02%</b>	<b>73.01%</b>	<b>69.54%</b>	<b>70.32%</b>
<b>Course Type</b>					
Basic Skills	73.93%	69.84%	65.96%	68.48%	65.05%
Transfer	71.51%	70.86%	71.14%	69.89%	70.10%
Vocational	80.11%	81.74%	81.07%	73.40%	77.17%

### Successful Course Completion by Course Modality

	Fall 2011	Fall 2012	Fall 2013	Fall 2014	Fall 2015
<b>Successful Course Completion Rate</b>	<b>72.94%</b>	<b>73.02%</b>	<b>73.01%</b>	<b>69.54%</b>	<b>70.32%</b>
<b>Course Modality</b>					
Distance Education	61.21%	62.76%	61.50%	57.45%	<b>58.93%</b>
Face-to-Face	73.75%	73.81%	74.29%	71.22%	72.28%

Source for all tables on this page: California Community Colleges Chancellor's Office (CCCCO) Data Mart, Retention/Success Rate

[http://datamart.cccco.edu/Outcomes/Course\\_Ret\\_Success.aspx](http://datamart.cccco.edu/Outcomes/Course_Ret_Success.aspx)

## Successful Course Completion by Discipline

The college uses locally-derived data, rather than the Chancellor’s Office Data Mart (used on the previous page), to examine successful course completion by discipline. The locally-derived data enable the college to use its own department and discipline taxonomy, which make the data more useful and relevant for program review. The overall successful course completion rates, presented in the first row of the table below, differ slightly from the successful completion rates presented in the previous tables of this section.

	Fall 2011	Fall 2012	Fall 2013	Fall 2014	Fall 2015
<b>Successful Course Completion Rate</b>	<b>72.13%</b>	<b>72.67%</b>	<b>73.64%</b>	<b>72.12%</b>	<b>72.98%</b>
<b>Discipline</b>					
ADMJ	71.35%	64.80%	68.31%	68.78%	61.29%
ADPE	92.73%	97.36%	96.65%	98.53%	96.87%
ANAT	54.65%	65.06%	63.89%	58.36%	60.94%
ANTH	66.64%	69.02%	70.69%	65.52%	69.93%
ARAB	48.15%	68.75%	58.62%		
ART	83.44%	83.29%	87.86%		
ARTB			74.09%	79.76%	80.30%
ARTC			91.19%	90.99%	85.72%
ARTD			85.91%	92.35%	88.43%
ARTG			77.86%	74.67%	83.27%
ARTH			70.85%	72.84%	80.18%
ARTP			78.49%	83.10%	79.61%
ARTS			81.14%	74.37%	70.27%
ARTV				68.57%	85.61%
ASTR	80.56%	77.91%	89.88%	87.66%	84.45%
AUTO	61.74%	59.79%	73.75%	77.12%	72.44%
BIOL	72.24%	76.57%	75.58%	69.40%	67.69%
BUSC	25.29%	50.43%	53.83%	42.67%	46.56%
BUSI	55.57%	62.29%	65.40%	65.51%	63.26%
CHDV	71.66%	76.03%			
CHEM	64.73%	68.89%	71.38%	62.03%	68.57%
CHIN	89.66%	81.48%	85.00%		
COMM	80.77%	79.41%	97.44%	93.55%	64.53%
COOP	72.35%	66.67%	75.71%	76.14%	88.35%
CSIS	68.06%	62.31%	70.46%	72.51%	72.58%
DANC	84.24%	83.53%	76.15%	77.88%	72.05%
DNTL	78.42%	87.28%	87.41%	88.62%	88.97%
DRAF	61.54%		68.75%	74.28%	83.33%
ECED			72.38%	81.66%	75.12%
ECON	67.65%	73.67%	71.10%	69.20%	74.95%
EDUC			47.06%	22.22%	70.00%

	Fall 2011	Fall 2012	Fall 2013	Fall 2014	Fall 2015
<b>Successful Course Completion Rate</b>	<b>72.13%</b>	<b>72.67%</b>	<b>73.64%</b>	<b>72.12%</b>	<b>72.98%</b>
<b>Discipline</b>					
EMMS	45.46%	44.52%	49.14%	66.19%	60.03%
ENGL	62.88%	63.48%	62.56%	60.93%	61.56%
ENGR	74.53%	88.09%	91.14%	96.12%	76.01%
ENSL	72.89%	69.68%	77.72%	83.96%	71.64%
ETNC	77.08%	73.25%	65.23%	59.54%	74.49%
FACD	100.00%	100.00%	100.00%		
FACS		83.33%			66.67%
FASH	71.25%	61.75%	66.26%	61.61%	53.90%
FIRE	94.94%	98.15%	90.91%	100.00%	
FPTC				75.63%	74.69%
FREN	64.79%	66.45%	65.58%	68.96%	66.99%
GENT	76.12%	95.24%	82.81%	82.83%	78.65%
GEOG	66.09%	66.19%	72.78%	78.13%	51.61%
GEOL	60.55%	73.05%	65.40%	71.32%	57.16%
GERM	93.42%	55.17%	66.15%	78.79%	35.29%
GWOS					63.44%
HIST	68.04%	71.99%	68.26%	63.39%	71.32%
HLTH	86.96%	72.73%	80.00%	61.76%	65.91%
HOSP	69.17%	84.83%	83.76%	83.23%	84.13%
HUMA	68.76%	62.34%	73.12%	66.68%	72.06%
HUMS	79.05%	67.95%	72.78%	62.04%	79.53%
INTD	60.00%	79.57%	56.17%	71.16%	83.83%
ITAL	44.97%	53.74%	66.19%		81.25%
JPNS	58.81%	68.45%	87.80%	80.53%	75.89%
LETP	97.70%	98.93%	98.68%	96.70%	97.15%
LIBR	75.20%	78.13%	73.23%	72.70%	72.36%
LING	69.20%	63.13%	72.34%	68.88%	70.01%
LNSK	74.18%	76.32%	71.65%	70.35%	75.96%
MAST	85.00%	72.00%	47.62%	31.58%	
MATH	55.48%	53.87%	56.07%	53.61%	52.15%
MEDA	80.75%	76.93%	68.61%	74.24%	74.95%
MUSI	84.75%	86.31%	84.98%	88.79%	83.41%
NURS	86.84%	94.88%	91.70%	91.01%	95.14%
NUTF	65.01%	67.31%	58.26%	56.46%	50.68%
OCEN	72.64%	83.07%	81.47%	75.00%	56.28%
ORNH	81.78%	77.00%	62.03%	57.25%	76.81%
PARK		89.66%	96.00%		
PERS	81.00%	80.12%	80.83%	73.96%	70.04%
PFIT	71.77%	70.36%	77.08%	76.77%	76.95%
PHED	87.66%	87.83%	94.91%	90.99%	90.48%

	Fall 2011	Fall 2012	Fall 2013	Fall 2014	Fall 2015
<b>Successful Course Completion Rate</b>	<b>72.13%</b>	<b>72.67%</b>	<b>73.64%</b>	<b>72.12%</b>	<b>72.98%</b>
<b>Discipline</b>					
PHIL	60.41%	56.08%	69.80%	52.59%	64.94%
PHOT	79.62%	72.54%	87.50%		
PHSO	74.95%	69.81%	88.53%	82.94%	84.65%
PHYS	65.04%	74.69%	73.81%	77.37%	75.16%
POLS	65.95%	70.62%	70.87%	66.37%	66.24%
PSYC	71.85%	68.05%	67.53%	70.50%	71.26%
REAL	38.10%	64.29%	75.99%	62.82%	72.24%
SIGN	71.78%	62.25%	55.72%	62.18%	69.01%
SOCI	70.70%	67.28%	55.87%	53.85%	66.48%
SPAN	65.27%	65.96%	66.56%	68.25%	69.73%
SPCH	79.97%	78.82%	78.89%	76.72%	74.76%
THEA	89.16%	94.01%	91.71%	90.95%	89.37%
WOMN	74.91%	70.81%	66.30%	63.91%	100.00%
WRLD		77.33%		61.84%	

*Source: MPC Office of Institutional Research, MIS Referential Files*

➤ **For more information:** <http://www.mpc.edu/about-mpc/campus-information/institutional-research>

**Institutional Research**

Institutional Reporting  
Student Success Reports

**RELATED LINKS**

- California Community Colleges Chancellor's Office
- California Department of Education - Dataquest
- Presentation on Student Success framework (ARCC 2.0)
- Accreditation

[About MPC](#) » [Campus Information](#)

## INSTITUTIONAL RESEARCH

Font Size: [+](#) [-](#) [+](#) Share & Bookmark [\[+\]](#) Feedback [Print](#)

### Welcome to the Office of Institutional Research's webpage!

The mission of the Office of Institutional Research at Monterey Peninsula College is to provide research to support institutional effectiveness and student learning.

### Student and Community Demographics

- Fast Facts: Education Center at Marina - 2016 (PDF)
- K-12 Trends – 2012 (PDF)
- MPC Community Student Demographics – 2012 (PDF)
- MPC Enrollment & Demographic Trends - 2013 (PDF)
- MPC Enrollment & Demographic Trends - 2014 (PDF)
- MPC Enrollment & Demographic Trends - 2015 (PDF)
- Participation Rates for Selected Cities in Service Area - 2014 (PDF)

### Student Preparedness and Achievement Data

- AP Exam Scores reported to MPC - 2015 (PDF)
- Student Equity Plan - 2015-16 (PDF)
- Student Success Scorecard - 2016 (PDF)
- Student Success Scorecard Trends - 2016 (PDF)
- Institution-set Standards - 2016 (PDF)
- Institution-set Standards - 2016: Disaggregated data (PDF)
- Course Completion & Retention Rates (PDF)
- Completions: Degrees and Certificates Awarded (as of 7/19/16) (PDF)
- Completions: Transfers (PDF)

### Contact Info

**Director of Institutional Research**  
Rosaleen Ryan, Ph.D.

Phone: (831) 646-4035  
Office: LTC 319

### News

No results found.

### Events

No results found.

