



Examining Trends in Online Instruction @ MPC

Understanding the Context

- **Fully Online Courses**
 - > 50% of instruction is delivered online
- **“Hybrid” Courses**
 - < 51 % of instruction is delivered online
- **Web-enhanced Courses**
 - Traditional face to face class with supplemental online activities (“seat time” is not replaced)

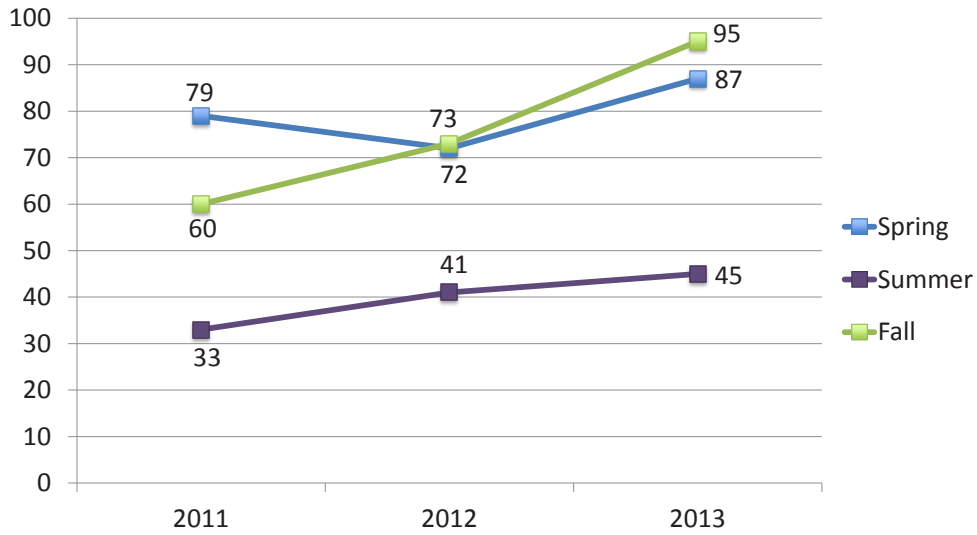
Online Courses & Programs

- **General Education Completion**
 - CSU GE (10/13 Courses)
 - IGETC (11/15 Courses)
 - MPC GE (6.5/7 Courses, no lab science)
- **Online Certificates**
 - Certificate of Training in General Business
 - Certificate of Training in Great Books
 - Certificate of Achievement in Family Research Studies*

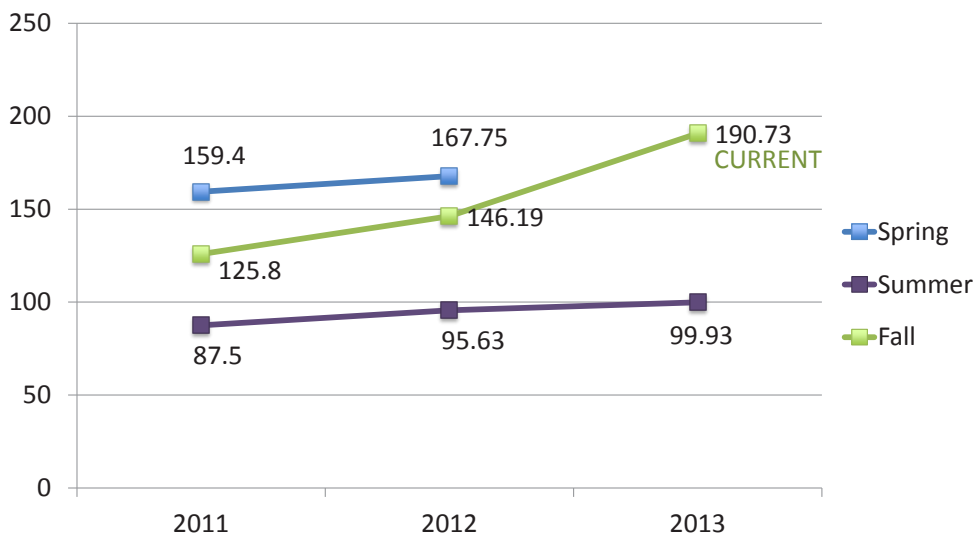
Online Courses & Programs

- **Online Associate Degree Completion**
 - Business Administration (for transfer)
 - General Studies - Emphasis in Humanities and Fine Arts
 - General Studies - Emphasis in Social Science

Online Sections by Semester



FTES Generated by Online Courses





What do we know about
our online students?

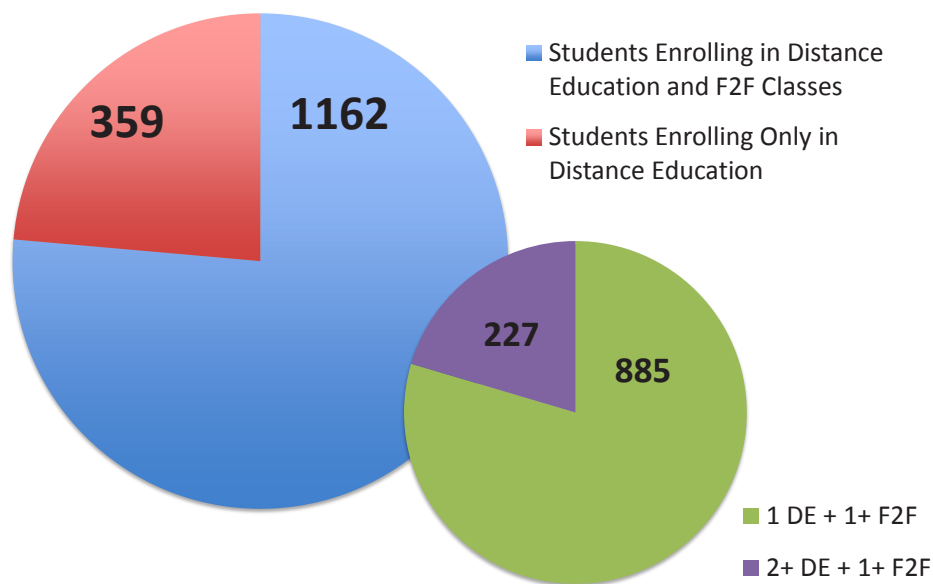
Spring 2013

1521 students enrolled in
distance education courses.

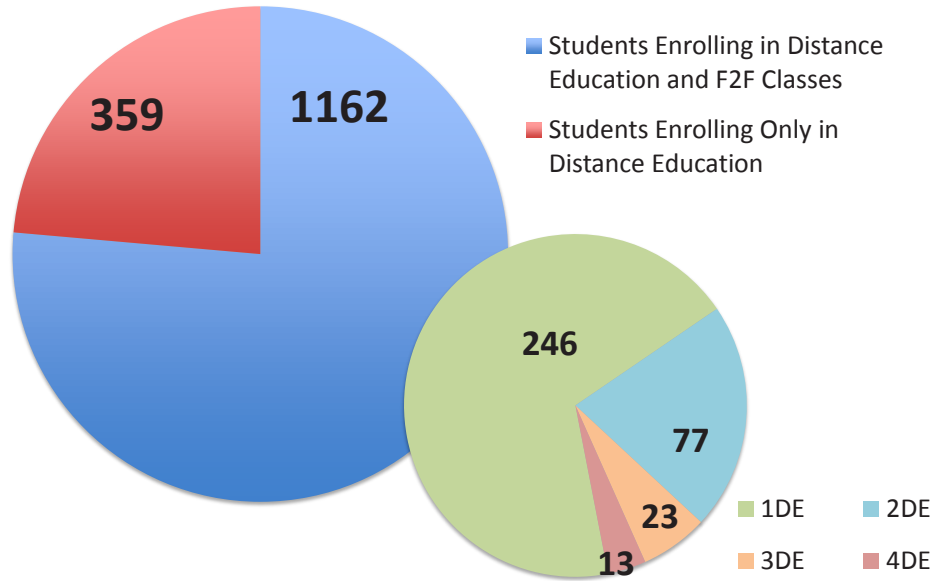
Spring 2013

Average load for a student taking one or more distance education course was **10.0 units**.

Spring 2013 Enrollment Trends



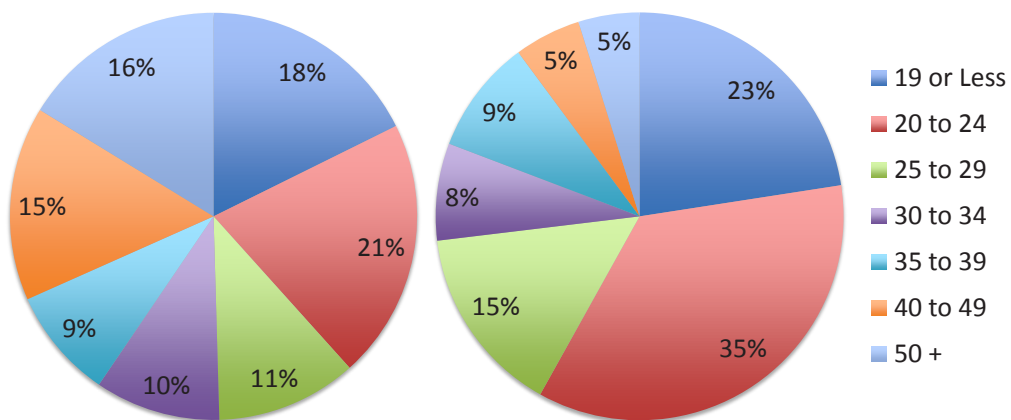
Spring 2013 Enrollment Trends



Fall 2012 – Students by Age

Overall MPC Population

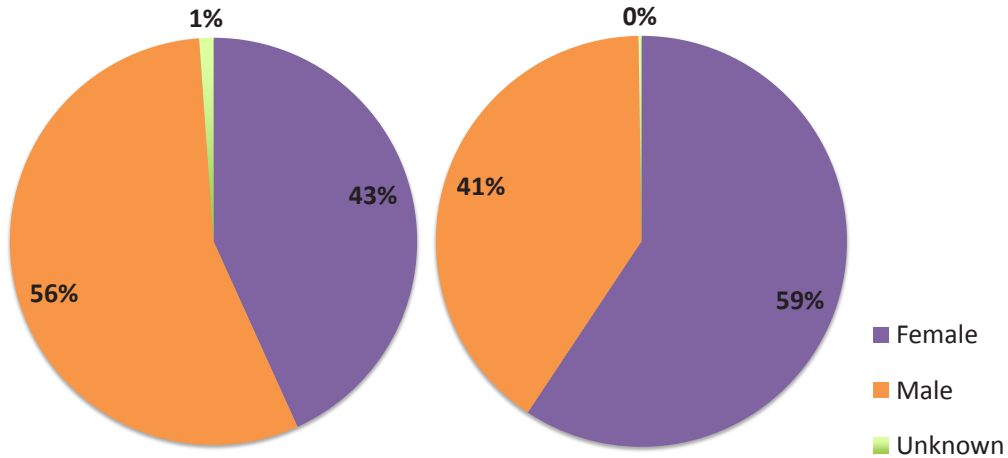
DE Students Only



Fall 2012 – Students by Gender

Overall MPC Population

DE Students Only



Fall 2012 – Students by Ethnicity

Overall MPC Population

DE Students

