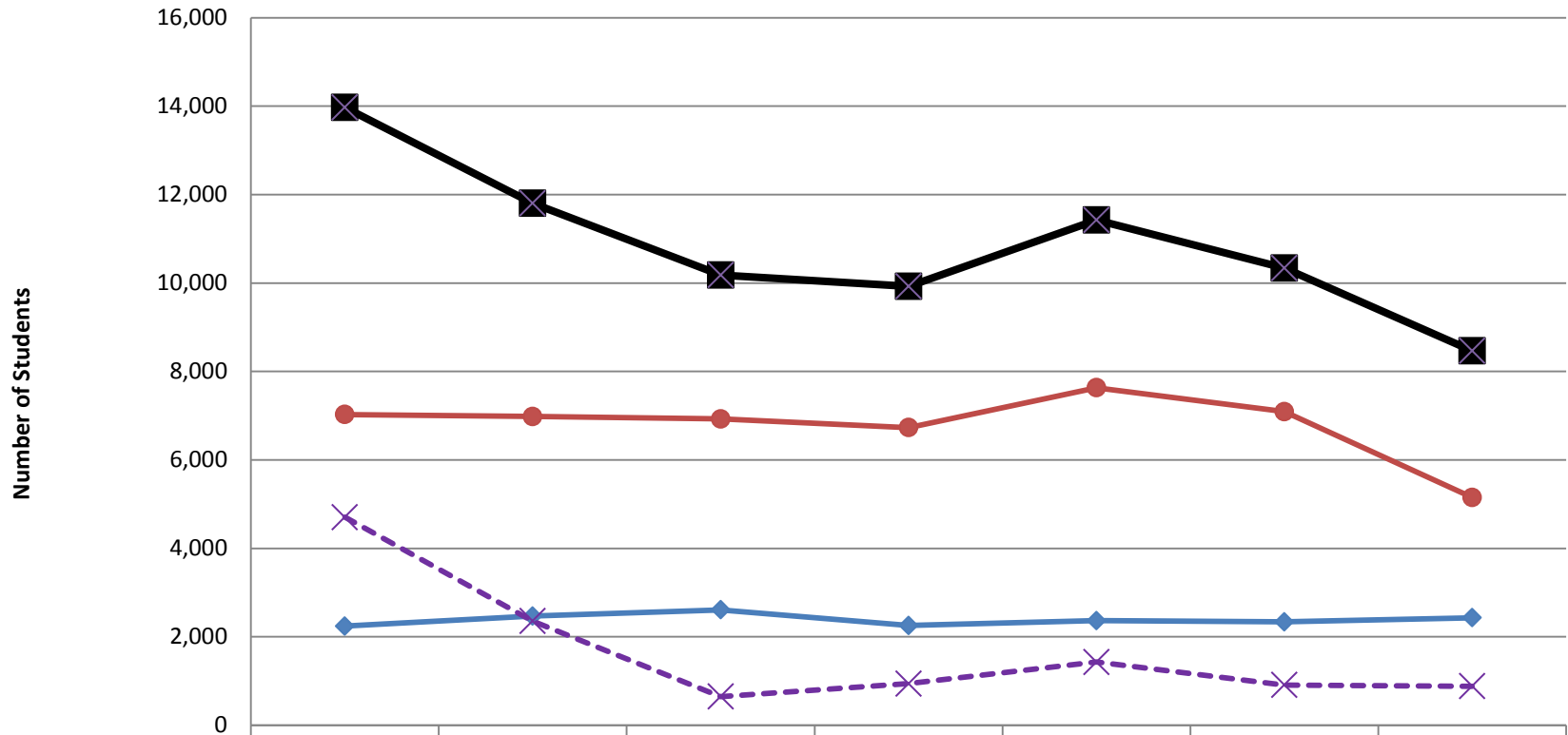


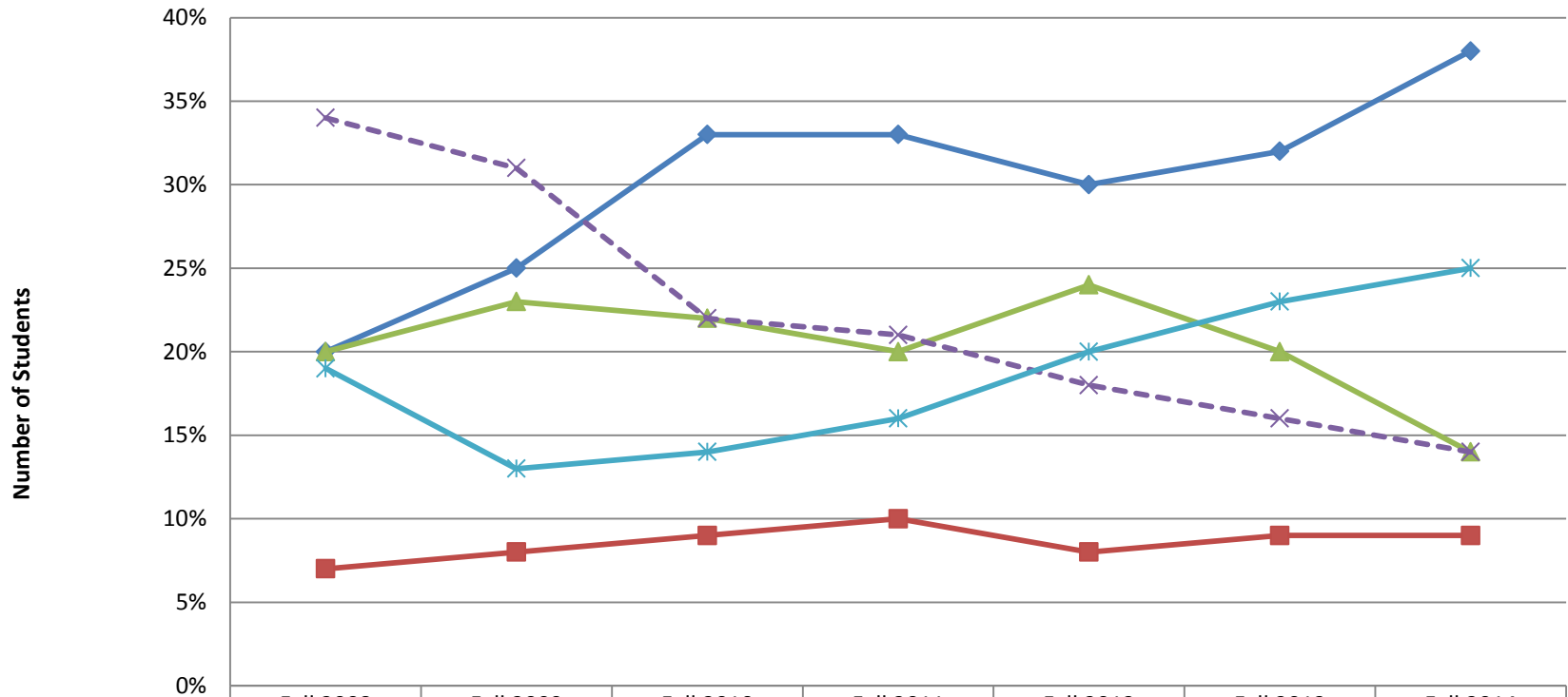
# Headcount trends at MPC



	Fall 2008	Fall 2009	Fall 2010	Fall 2011	Fall 2012	Fall 2013	Fall 2014
◆ Full time (12+ units)	2,240	2,469	2,608	2,255	2,364	2,336	2,429
● Part time (<12 units)	7,027	6,981	6,927	6,729	7,631	7,093	5,153
✕ Non-credit only	4,705	2,356	647	941	1,429	910	882
■ TOTAL	13,972	11,806	10,182	9,925	11,424	10,339	8,464

Source: CCCCO DataMart

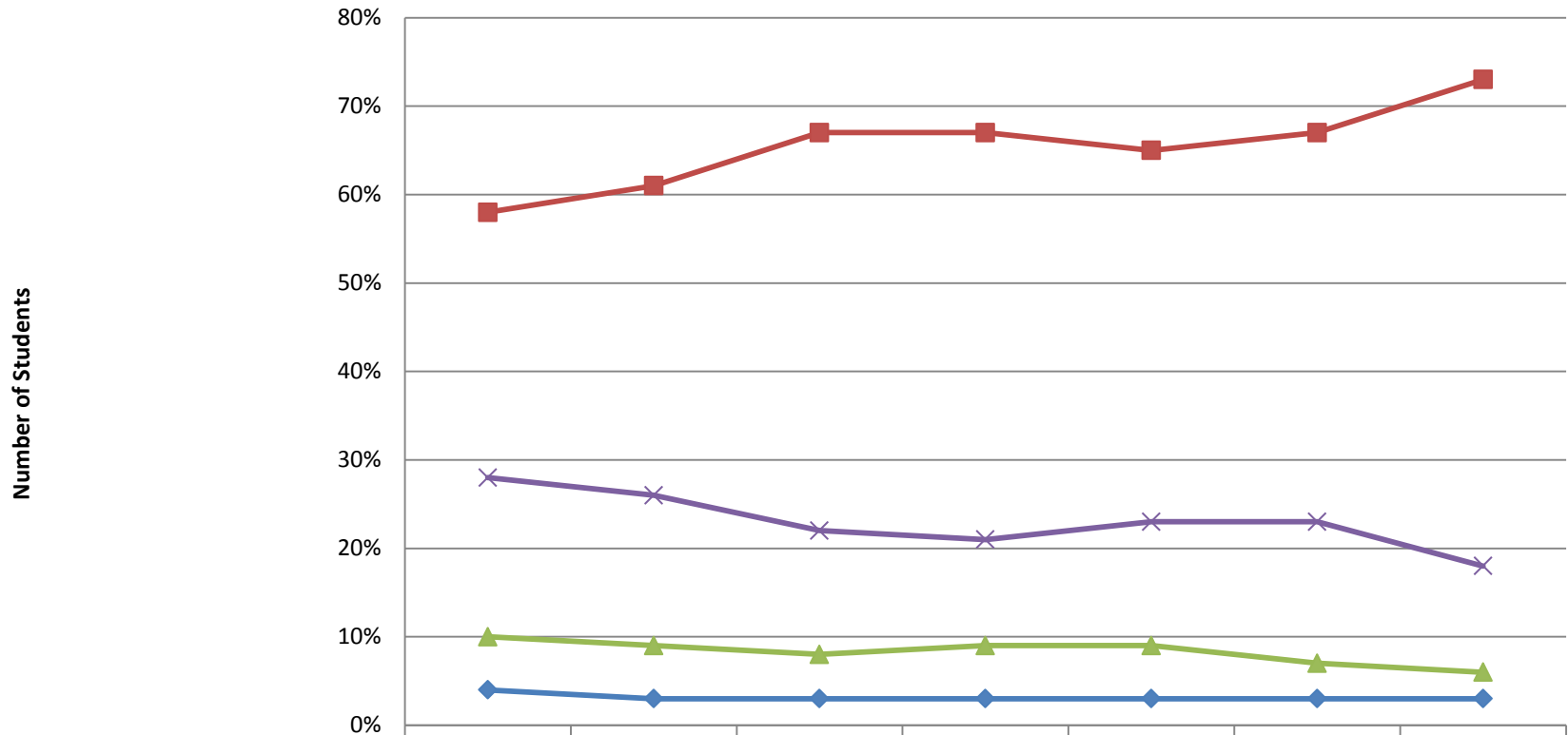
# Educational Goal trends



	Fall 2008	Fall 2009	Fall 2010	Fall 2011	Fall 2012	Fall 2013	Fall 2014
◆ Transfer to 4-year	20%	25%	33%	33%	30%	32%	38%
■ Degree/Certificate	7%	8%	9%	10%	8%	9%	9%
▲ Career/Job skills	20%	23%	22%	20%	24%	20%	14%
✕ Lifelong learning	34%	31%	22%	21%	18%	16%	14%
* Other/Undecided	19%	13%	14%	16%	20%	23%	25%

Source: MIS Referential files

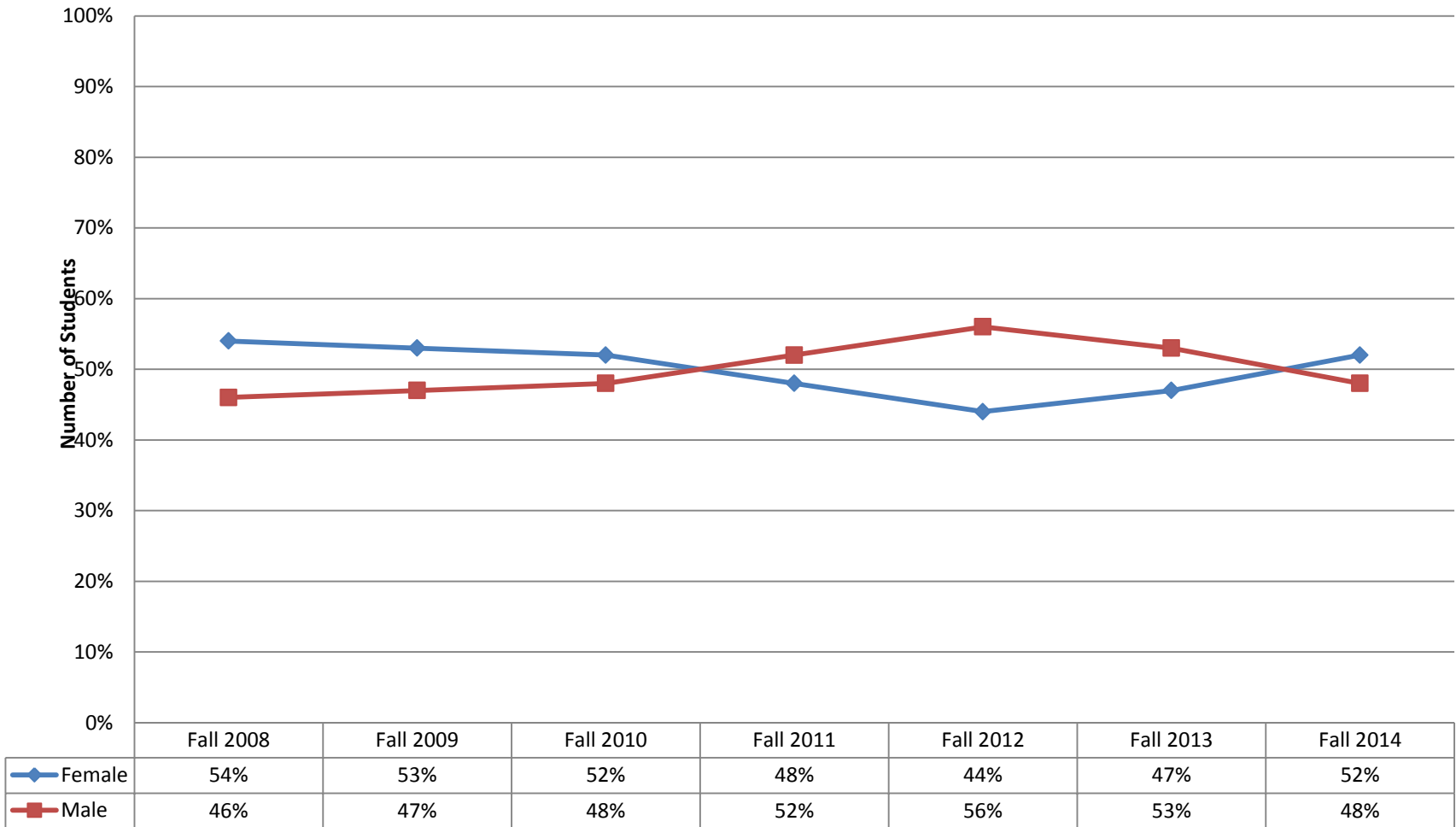
# Academic Level



	Fall 2008	Fall 2009	Fall 2010	Fall 2011	Fall 2012	Fall 2013	Fall 2014
Concurrently enrolled K-12 student	4%	3%	3%	3%	3%	3%	3%
w/o a college degree	58%	61%	67%	67%	65%	67%	73%
Received an Associate degree	10%	9%	8%	9%	9%	7%	6%
Received a Bachelor degree or higher	28%	26%	22%	21%	23%	23%	18%

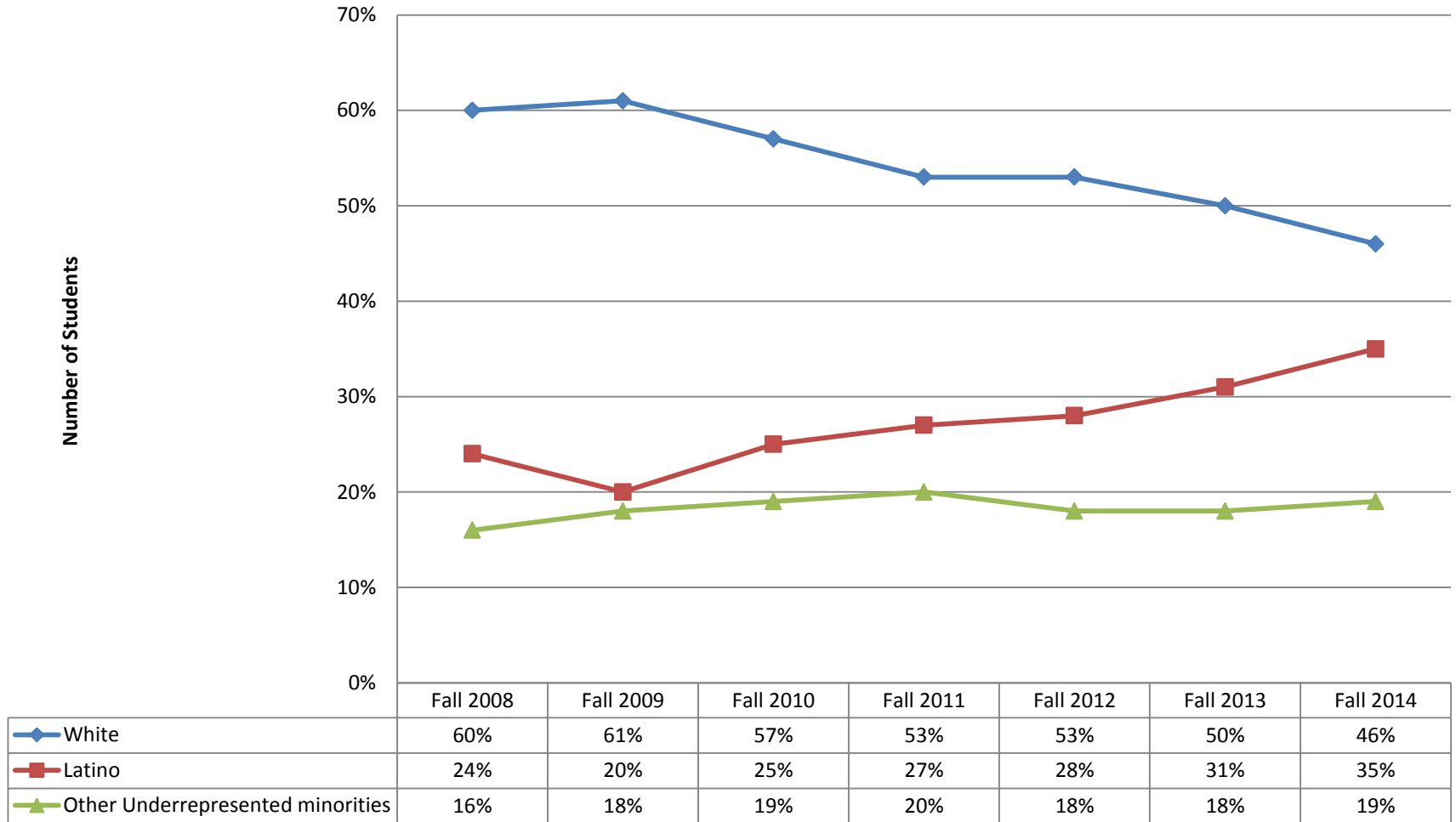
Source: CCCC DataMart

# Gender



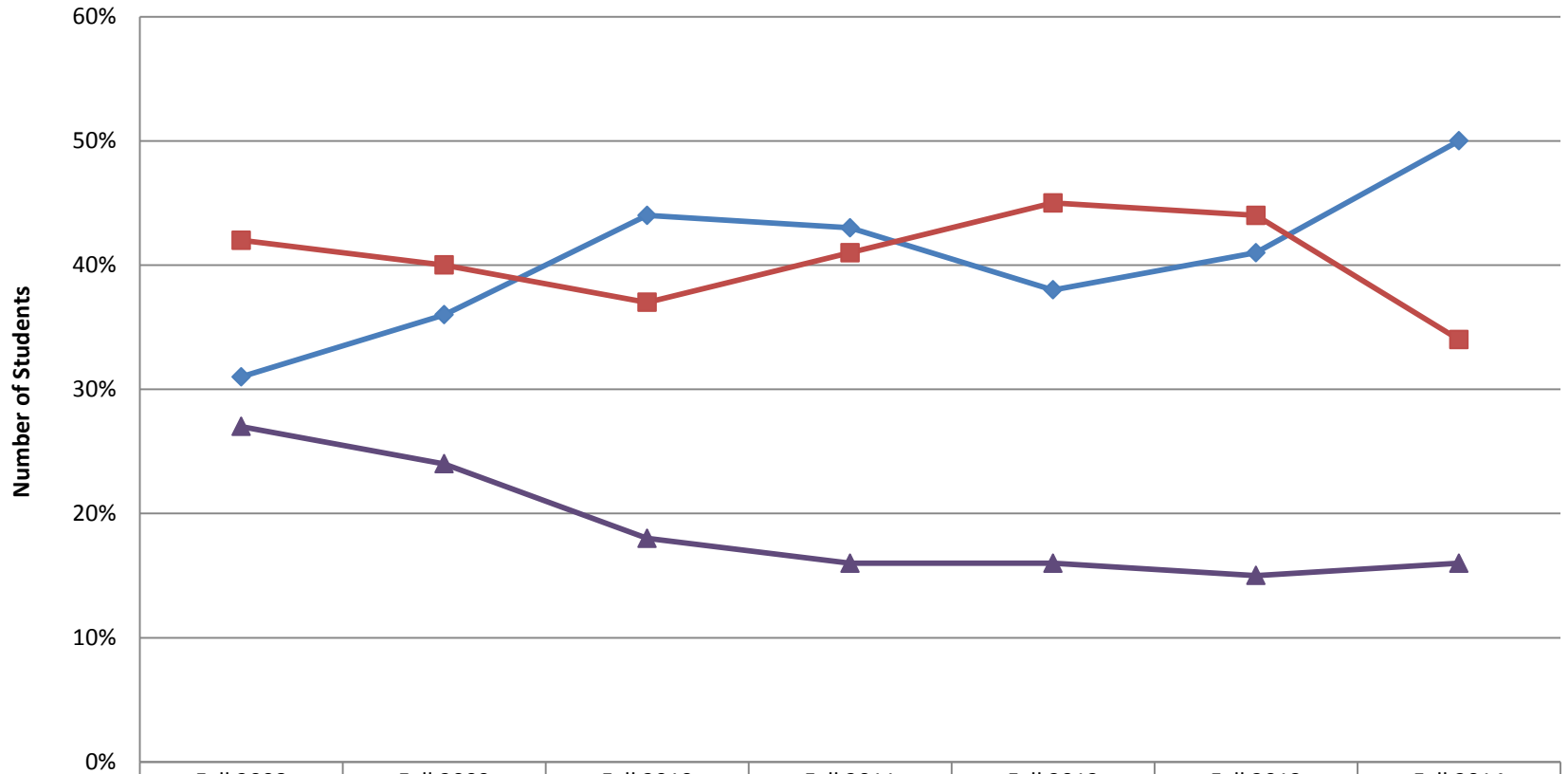
Source: CCCC DataMart

# Ethnicity



Source: CCCCO DataMart

# Age



	Fall 2008	Fall 2009	Fall 2010	Fall 2011	Fall 2012	Fall 2013	Fall 2014
◆ <25 years	31%	36%	44%	43%	38%	41%	50%
■ 25-49 years	42%	40%	37%	41%	45%	44%	34%
▲ 50+ years	27%	24%	18%	16%	16%	15%	16%

Source: CCCCO DataMart